



Water and Sanitation Sector Support Scheme

Austrian Republic

Kommunalkredit Public Consulting (KPC) at a Glance

	Fields of business	<ul style="list-style-type: none">▪ KPC is specialised in the management of support schemes , programmes and consulting services▪ Focus on climate and environmental projects in the fields of:<ul style="list-style-type: none">– Renewable energies und energy efficiency– Water management, flood protection and remediation of contaminated sites– International Climate Protection and Climate Finance International
	Industry	<ul style="list-style-type: none">▪ Corporate Consulting and Corporate Organisation
	business	<ul style="list-style-type: none">▪ Revenue 2020 EUR 15,7 Million
	Skilled employees	<ul style="list-style-type: none">▪ 119 Employees as of December 2020
	Structure of ownership	<ul style="list-style-type: none">▪ 90 % Kommunalkredit Austria AG▪ 10 % Raiffeisen Landesbank Oberösterreich

- **Water Act** came into force (1959)

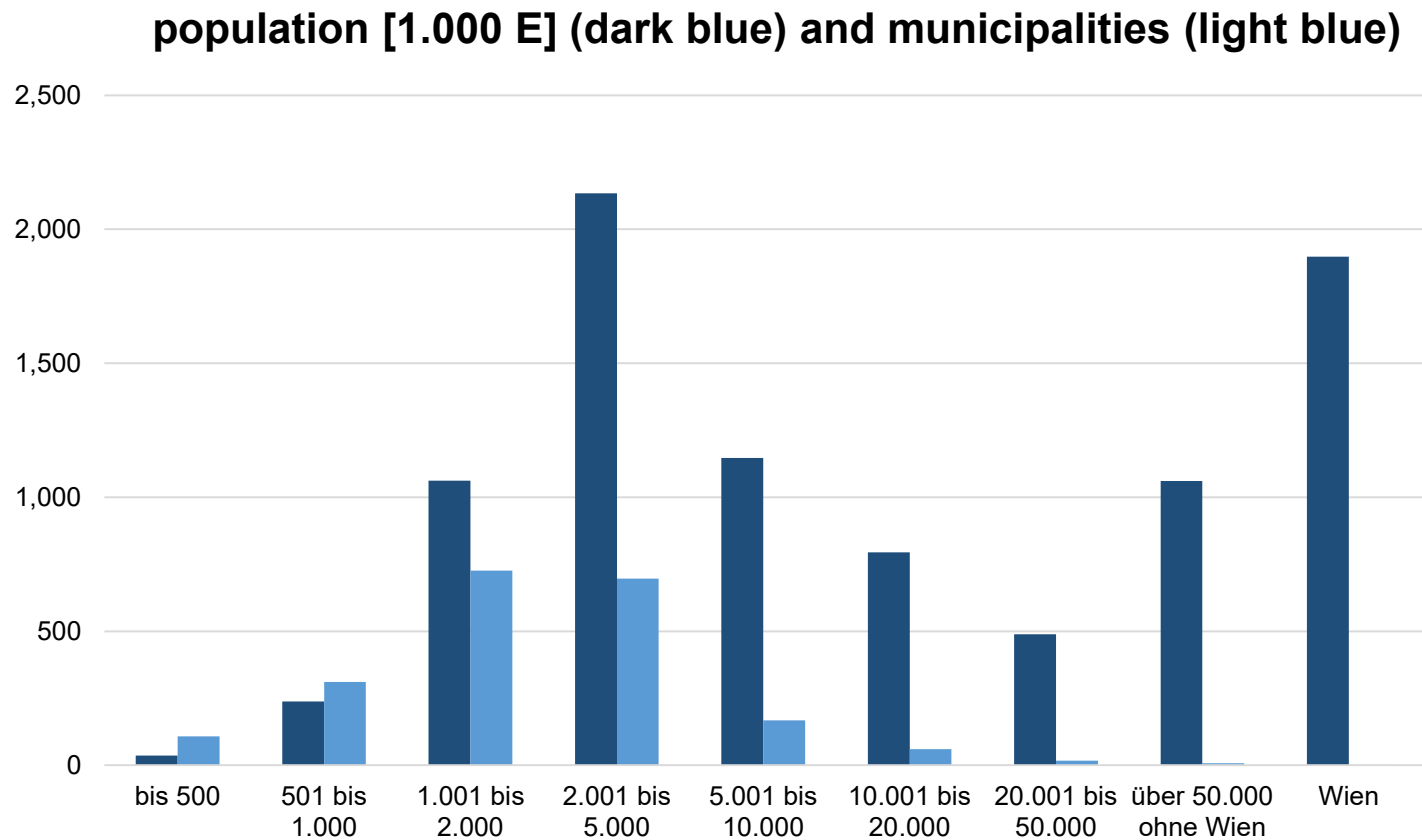
- Set up of the **Water Management Fund (WMF)** (1959)
 - Priority task: Water supply for municipalities
 - In the 60s additional: Wastewater sewerage
 - In the 70s: Focus on wastewater
 - In the 80s: Large plants in all major cities
 - Since the 90s: Small plants in rural areas

- **Passing of a resolution on the new Law on Environmental Support in 1993**
 - introduction of new support rules
 - delegation of the management to **Kommunalkredit Public Consulting**

- Mountainous and lowlands
- More than 50% of population lives in smaller municipalities
- High number of small settlements
- Some regions facing troubles due to drought periods
- Organisation of Austrian Water Supply:
 - ca. 1.900 municipal water supply facilities
 - ca. 165 associations of municipalities
 - ca. 3.300 water cooperative societies
 - ca. 5.200 smaller individual water supply facilities
 - ca. 800.000 people have own well
- Need for rehabilitation of existing networks and plants



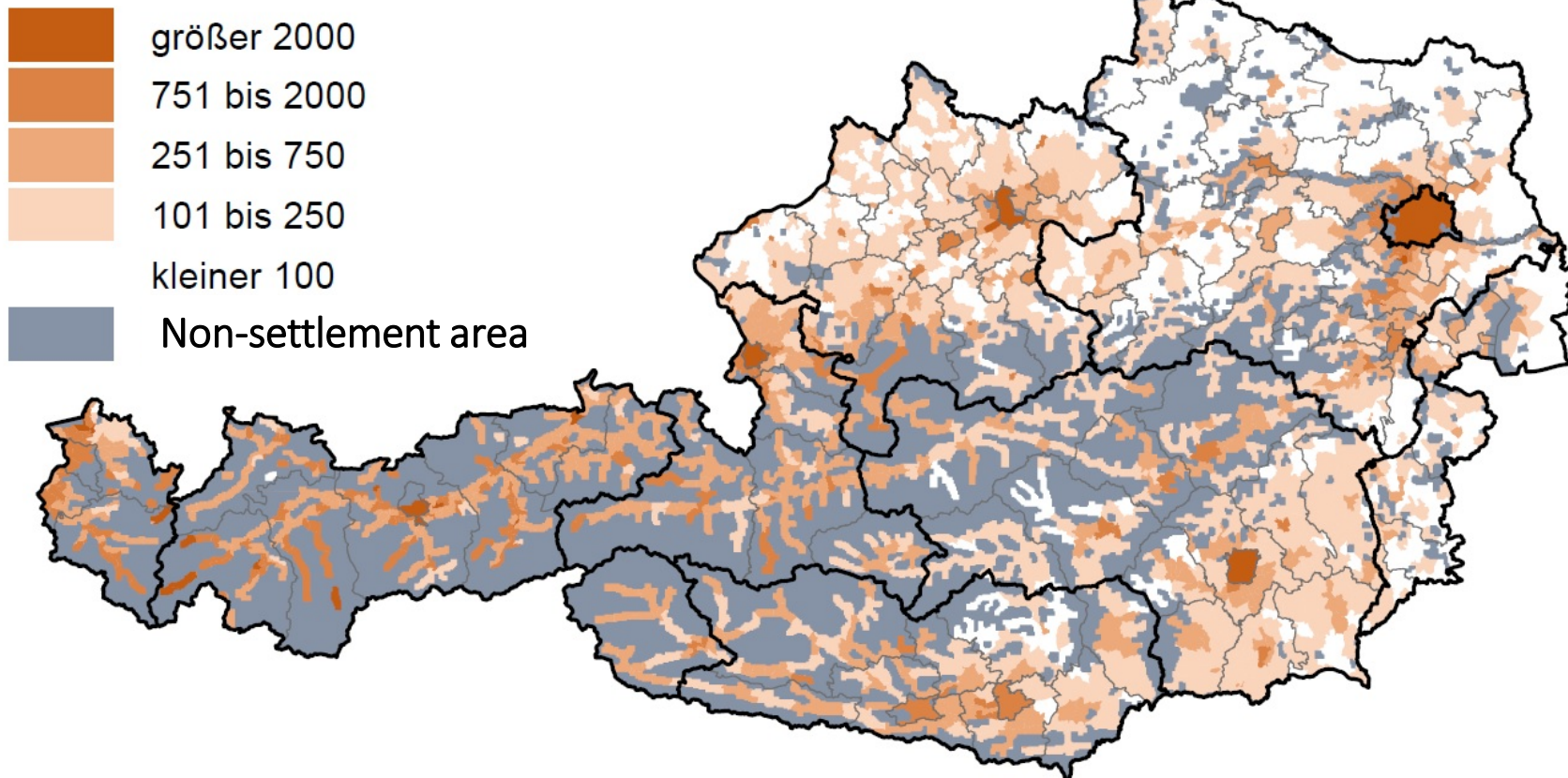
Distribution of population



Quelle: Statistik Austria (Stand 2019)

Distribution of population

Number of inhabitants per km² settlement area



Quelle: Statistik Austria – Wohnbevölkerung (01.01.2019), Betten (Tourismusjahr 2018/2019), Nicht- Dauersiedlungsraum

Main Stakeholders:

- Owner: Austrian Ministry for Agriculture, Regions and Tourism
- Committee to advice ministry (political parties, association of municipalities)
- Delegated Manager (by Law): Kommunalkredit Public Consulting
- Supported by the 9 Austrian Federal States and their own support schemes

Budgetary Source:

- state budget (defined part of tax income)
- Amount of donation of support scheme is legally defined and periodically adjusted (now 80 mio. Euro per year)

Contractual relation

Implementation agreement, between:

- Austrian Ministry for Agriculture, Regions and Tourism
- 9 Federal States of Austria
- Kommunalkredit Public Consulting (KPC)

Contract, between:

- Austrian Ministry for Agriculture, Regions and Tourism and
- Kommunalkredit Public Consulting (KPC)

governing

- the Services and
- the Rights and Obligations

- Municipalities
- Associations of municipalities
- Water cooperative societies
- Public Utilities
- Individuals or enterprises (for own demand)

Applicable assets

- Construction of new assets
 - Wells and springs
 - Water and waste water treatment plants
 - Networks
 - etc.
- Adaptation of existing assets to state of the art
- Renovation of existing assets

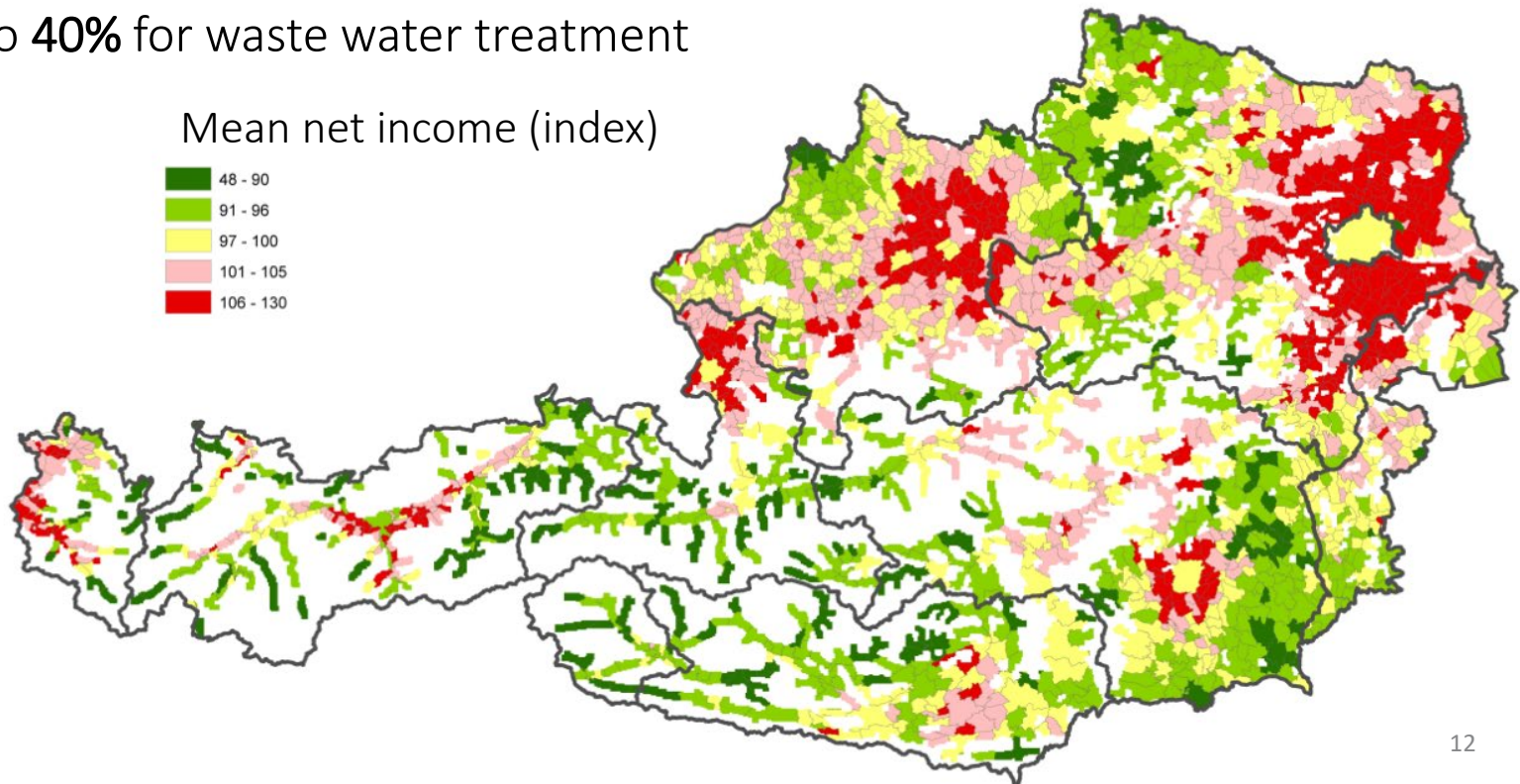


- Digital cadastre of networks
- Renovation after floods and other natural disasters
- Small (mostly private) water supply and waste water disposal systems
- Benchmarking



Funding rates

- Basic funding rate: equal for water supply and waste water **10%**
- Additional funding rate: depending on spending capacity of different regions and specific costs
 - Up to **25%** for drinking water supply
 - Up to **40%** for waste water treatment



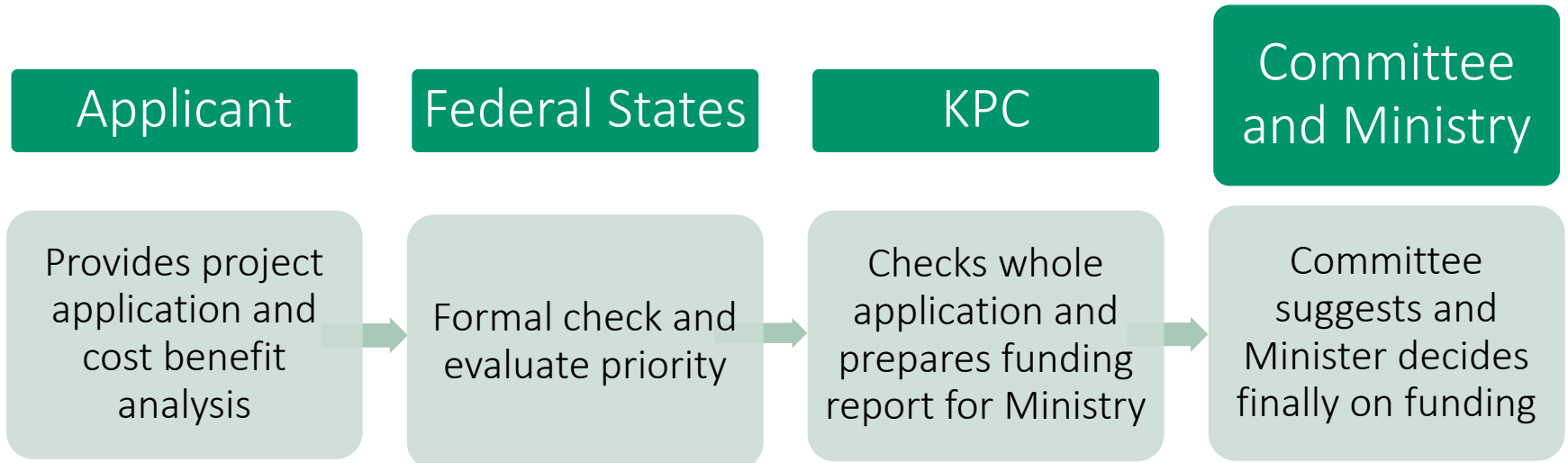
- Technical and legal conditions:
 - Cost/Benefit analysis
 - Permission according to the water law
 - Application before start of implementation
 - State of the art

- Economic components
 - Cost accounting
 - Reasonable tariff systems
 - Business plan for future renovation and reinvesting measures

WSS Support Scheme

Task allocation

Application phase

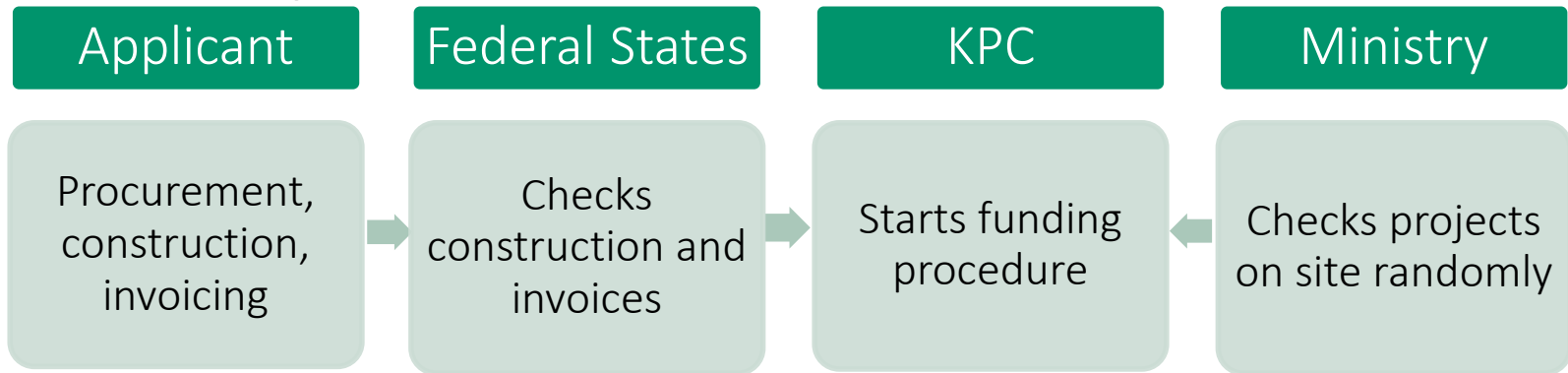


Contract phase

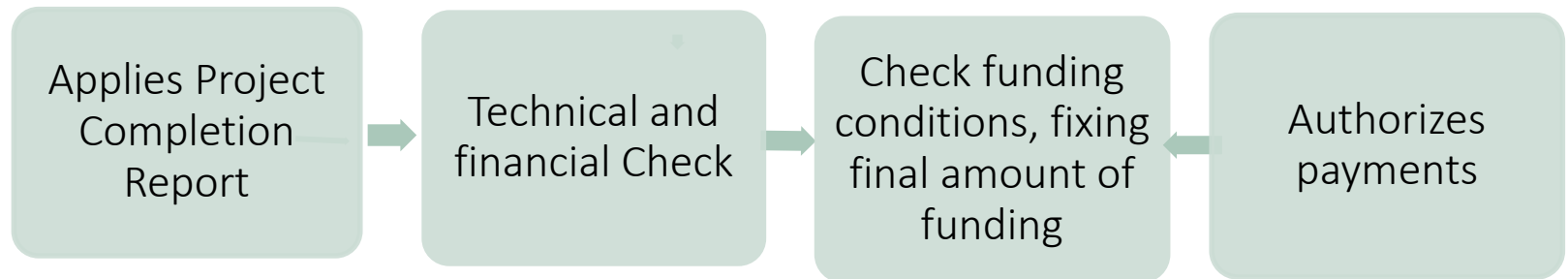


Task allocation

Construction phase



Project completion phase





Kommunalkredit Public Consulting GmbH

Tuerkenstrasse 9, 1090 Vienna

Phone: +43 1 31631

Fax: +43 1 31631 104

www.publicconsulting.at