



# Shipments of Waste Enforcement Actions Project (LIFE SWEAP)

Results of the SWEAP project focusing on joint inspections  
Katie Olley  
Project Leader



The IMPEL LIFE SWEAP project (LIFE17 GIE/BE/000480) has received funding from the LIFE Programme of the European Union



## Contents

1. IMPEL's work under Enforcement Actions Projects
2. Shipments of Waste Enforcement Actions Project (Life-SWEAP)
3. The inspectors, types of inspections and cases
4. Recent results
5. Plastic wastes
6. Novel technologies
7. Upcoming work & collaboration



## European Union Network for the Implementation and Enforcement of Environmental Law (IMPEL)

Set up in 1992 as Network of European regulators for implementation and enforcement of environmental law

55 environmental authorities in 36 countries

### Expert Teams

Five thematic areas:

1. [Industry regulation](#)
2. [Waste and TFS](#)
3. [Water and land](#)
4. [Nature protection](#)
5. [Cross-cutting tools and approaches](#)

[IMPEL - Waste and TFS on Vimeo](#)



**EU Life-funded  
project 2018 to  
2023**

Follows on from  
projects 2003 to  
2018

IMPEL is the Co-  
ordinating  
Beneficiary

**Associated  
Beneficiaries:**

- Scotland (SEPA), England (EA), Ireland (NTFSO), Northern Ireland (NIEA), Slovenia (IRSOP) and Malta (ERA)

34 participating  
countries (IMPEL  
members)

Project Executive:  
The Netherlands  
(ILT)

H-LAB: Europol,  
Basel Convention  
Secretariat, ILT,  
WCO, OLAF





# Work packages



**Capacity building and training**  
150 customs officers  
120 Inspector exchanges



**45,000 co-ordinated inspections throughout the waste management chain**

## Innovative enforcement tools

- Reporting app
- Inspection app
- GPS tracking
- Shipment mapping
- Online training & webinars



## Intelligence gathering and sharing

- Intelligence products
- Nominal data exchange
- Working with Europol



**International collaboration, communication and awareness-raising**  
Industry guidance





# SWEAP

## Waste Shipment Officers

- Competent authorities / environmental regulators / municipalities
- May or may not be 'arms-length' government body
- Often regulate a number of regimes e.g. REACH, producer responsibility, etc.
- Well-established network
- Limited knowledge of customs procedures





## Types of cases

Press release

**Convicted waste fraudster has more than 9 years added to jail time for failing to repay £1.3 million in ill-gotten gains**

A convicted waste criminal has had an additional 9 years and 4 months added to his current 7 and a half year fraud sentence. The defendant will now serve a total of 16 years.



Shipped as waste paper





## Shipment of Waste Enforcement Actions Project

LIFE SWEAP is co-funded by the LIFE programme of the European Union and co-ordinated by the IMPEL Network. The overall purpose of the project is to support the circular economy by disrupting the illegal waste trade at the EU level by:



### CAPACITY BUILDING & TRAINING

Increasing skill set amongst inspectors and law enforcement agencies

- 150 customs officers
- On-line toolkit
- 30 Inspector exchange programmes
- Best practice meetings
- Inspection app



### CO-ORDINATED INSPECTIONS

Intensifying collaboration nationally and internationally

- Performance of EU co-ordinated inspections throughout the waste management chain
- 45,000 inspections



### INNOVATIVE TOOLS

Developing innovative tools and techniques

- Geographical mapping tool
- GPS tracking
- Reporting app



### INTERNATIONAL CO-OPERATION AND AWARENESS-RAISING

Creating EU-wide data set

- Global and regional networking
- Communication to compliance tool



### INTELLIGENCE

Providing intelligence products

- Data collection and analysis
- Intelligence reports



# Customs training

- Curriculum covers:
- Waste shipment controls
- 'How to speak Basel codes'
- Practical exercises





On the ground training  
Valencia – May 2022



# World Customs Organization

Operation Demeter

Assists in mobilising co-operation between competent authorities and customs





## SWEAP Co-operation between authorities



Co-operation with other regulators:

- 80% other Competent Authorities,
- 90% with Police
- 80% with Customs
- 40% with Prosecutor
- 30% Port/train operator
- 20% Other

- 65% have intelligence capacity
- 80% use risk assessment

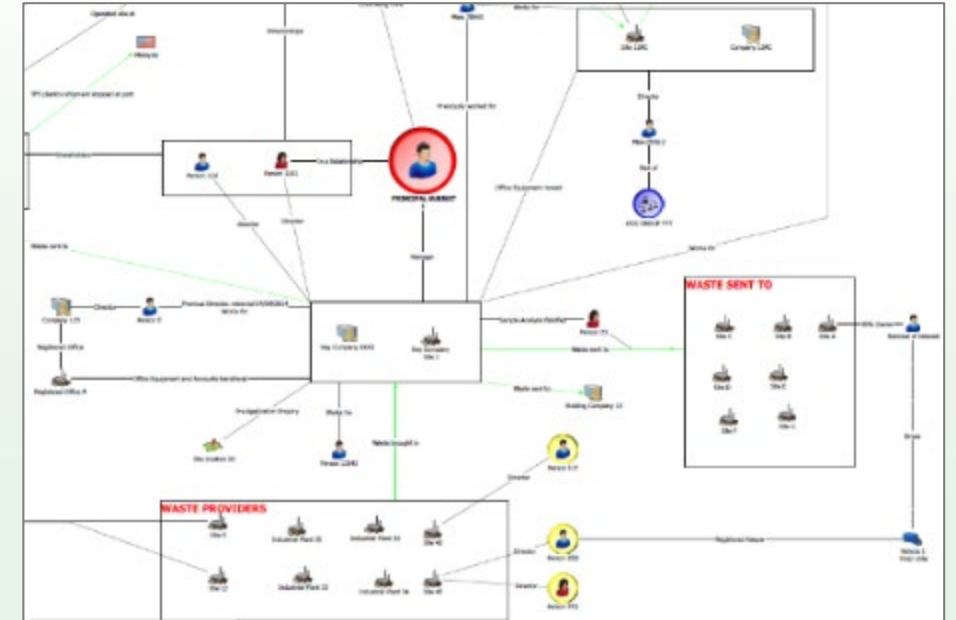
Customs:

- ▶ 65% work with customs to create inspections plans
- 44% say waste is high on customs priority list



## Police & prosecutors

- Europol
- Feed into SIENA
- Training to Judges and Prosecutors via Academy of European Law
- Training during SWEAP Best Practice meetings from Prosecutors





## Portal for Environmental Enforcers

The online toolkits are free to members of relevant Competent Authorities. Please [log in or register](#) and once we verify your information, we will forward you a password to access the content.



Shipment of Waste



Wildlife



Waste Crime

The PREVENT portal provides an online depository of training and capacity building materials. This portal is a collaborative work by projects coordinated by IMPEL and executed with various consortium partners.



The PREVENT portal is a joint activity by [the WasteForce project](#) (funded by the European Union's Internal Security Fund – Police (ISFP/2017/AG/ENV/821345)), [the LIFE SYMAP project](#) (funded by the LIFE Programme of the European Union) and the SPIDERWEB Project (jointly financed by the European Union and the Federal Republic of Germany).

ABOUT

PARTNERS

DISCLAIMER

PRIVACY POLICY

COOKIE POLICY





Total of 62,000 inspections to March 2022  
Approx. 4010 violations  
Clear shifts in plastic waste movements

## Inspection results

# DESTINATION of illegal shipments



Americas  
**>1%**

Africa  
**15%**

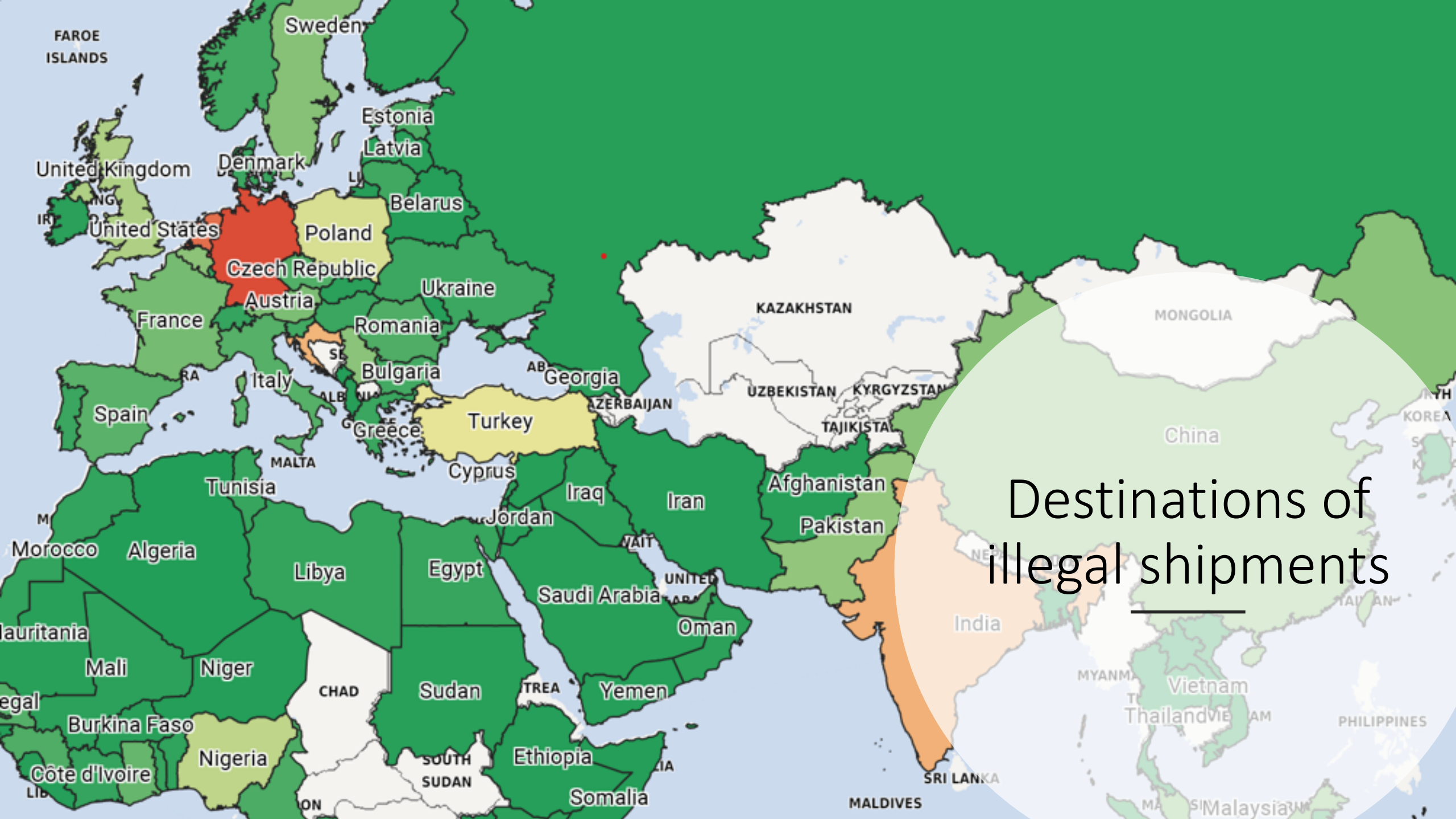
Europe  
**56%**

Asia  
**17%**

## Main waste types

- Plastics
- ELVs
- Paper
- e-waste
- Metals

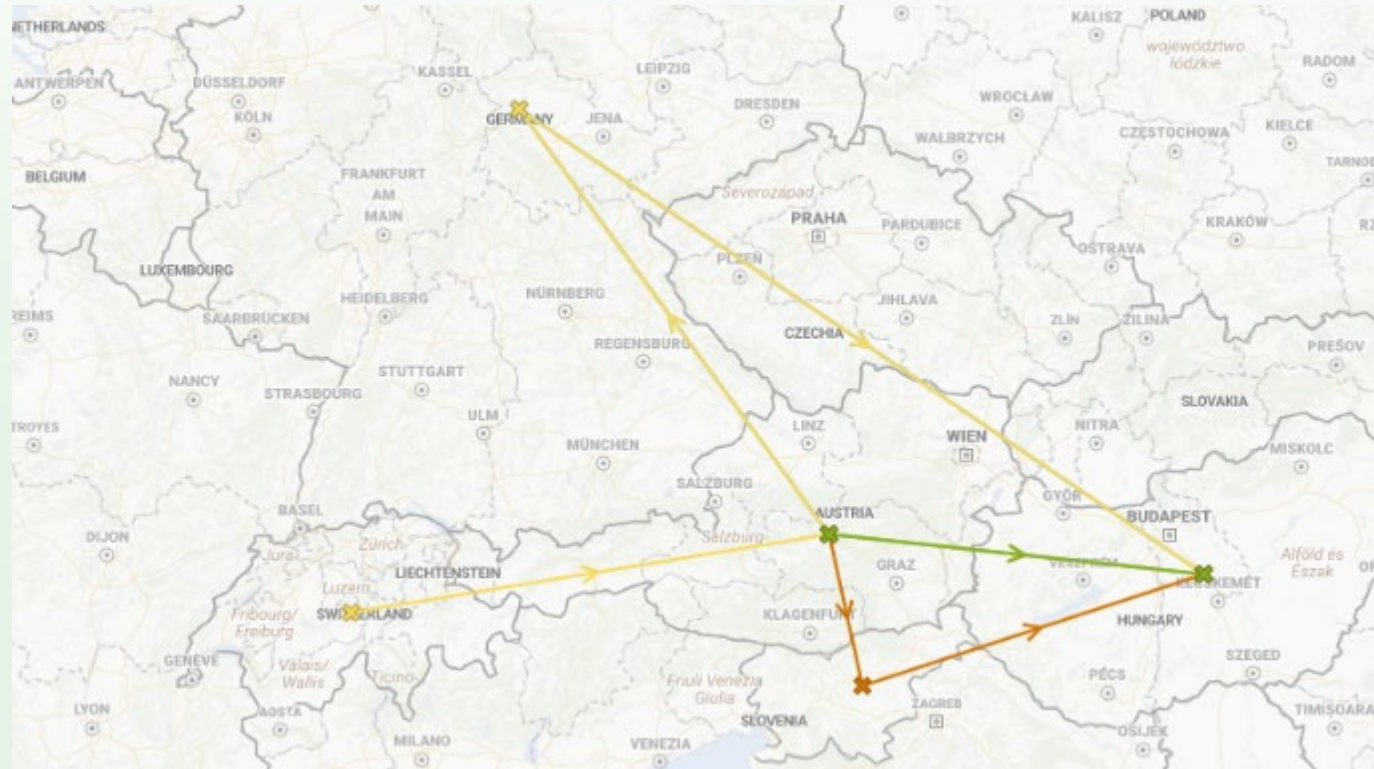




Destinations of  
illegal shipments



## Routes becoming more refined





## Welcome to the SWEAP Inspections tool

To record inspection data on transfrontier shipments (TFS) of waste on the spot, the LIFE SWEAP project developed an inspection data reporting application for mobile devices. The app is for inspectors and law enforcement officers in the EU to record their inspections of waste shipments and allow their organisations to have a full record of the inspections, the violations detected and follow-up actions.

This tool summarised that data.

For help using this tool please review the [guidance](#).

Any queries should be directed in the first instance to [Transfrontier@sepa.org.uk](mailto:Transfrontier@sepa.org.uk)

Please use the drop down navigation below to find the data you want to see:

Entrance ▾

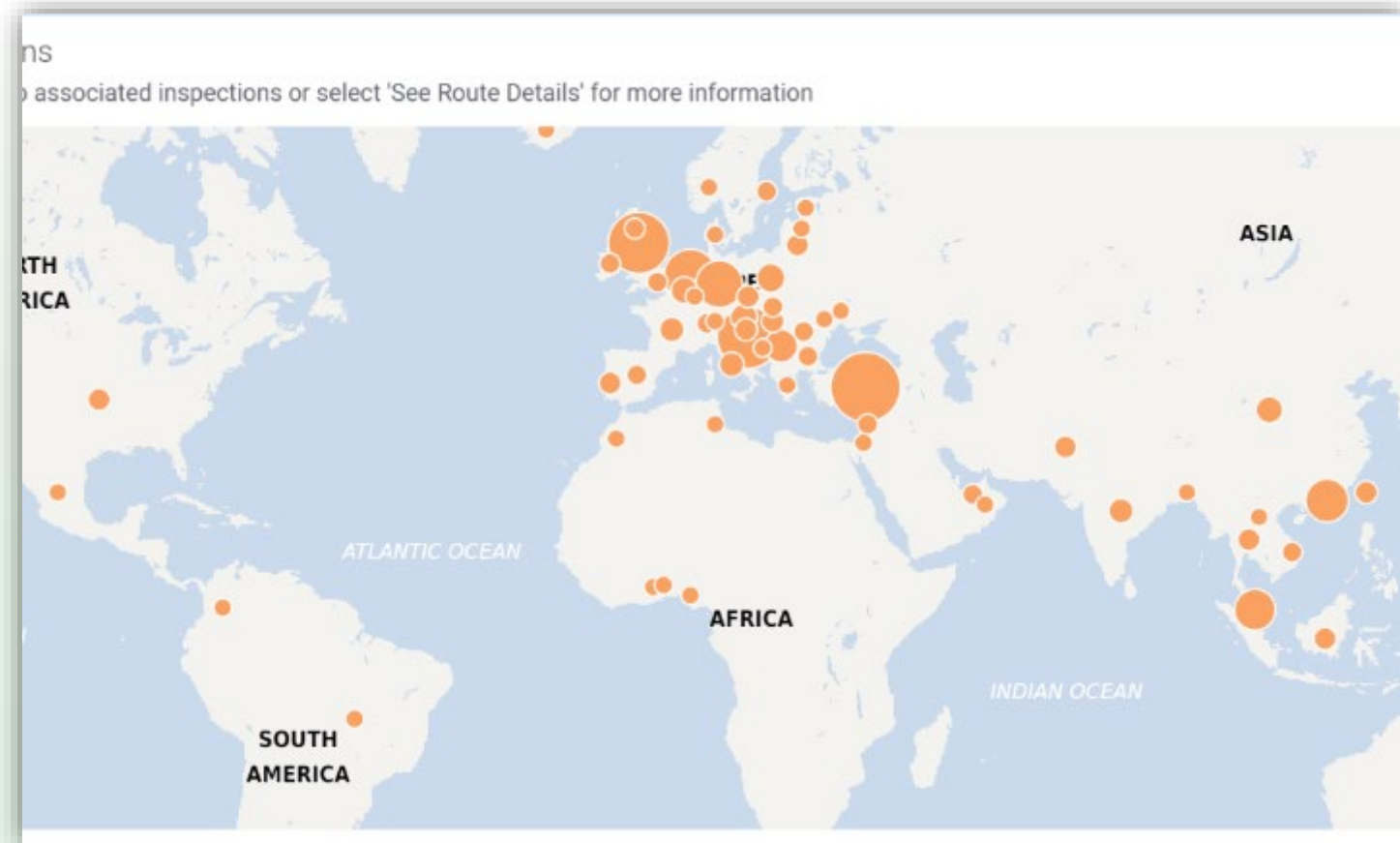
*Latest entry 17 September 2021*



The IMPEL LIFE SWEAP project (LIFE17/08/00/000000) has received funding from the LIFE programme of the European Union



# Illegal shipments of plastics from Europe (1/1/2020 to 31/3/2022)





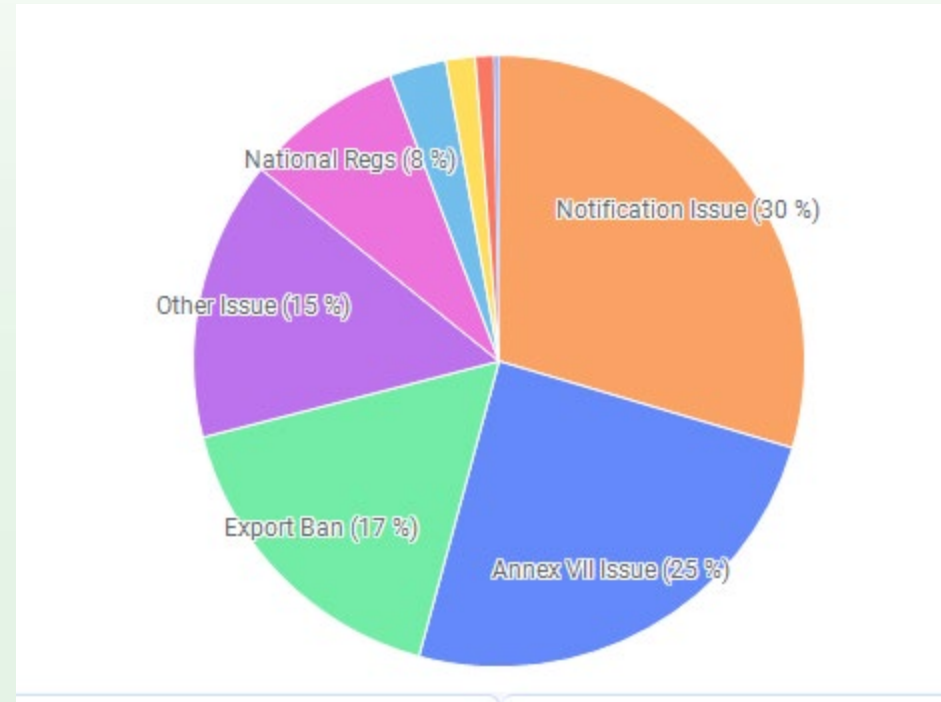
# End-of-Life Vehicle destinations

'See Route Details' for more information





# Types of violations





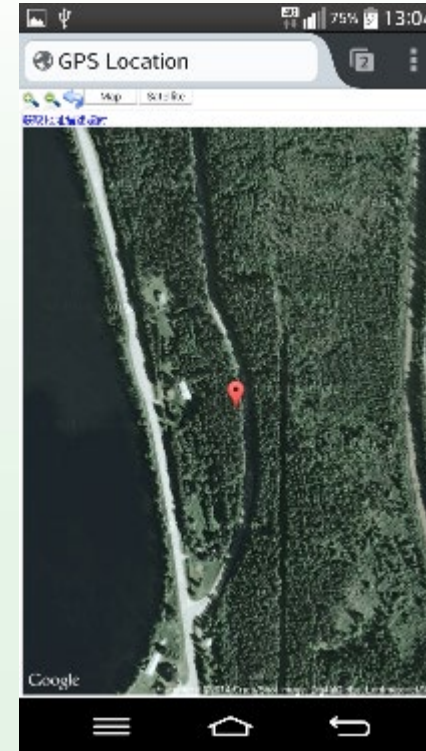
Multi-country  
exchanges:  
Starting again 2022

# SWEAP GPS tracking



In co-  
operation with  
Police

Development  
in trackers  
over last two  
years



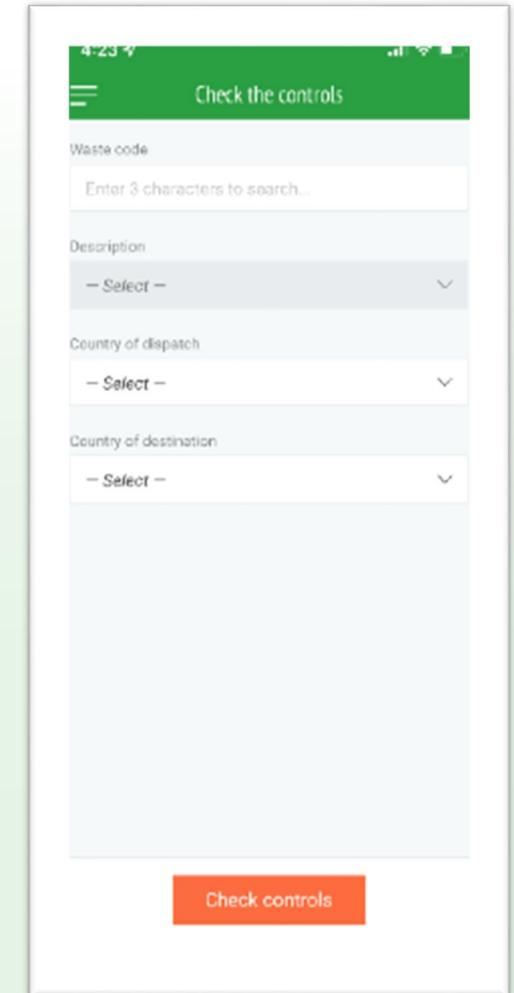
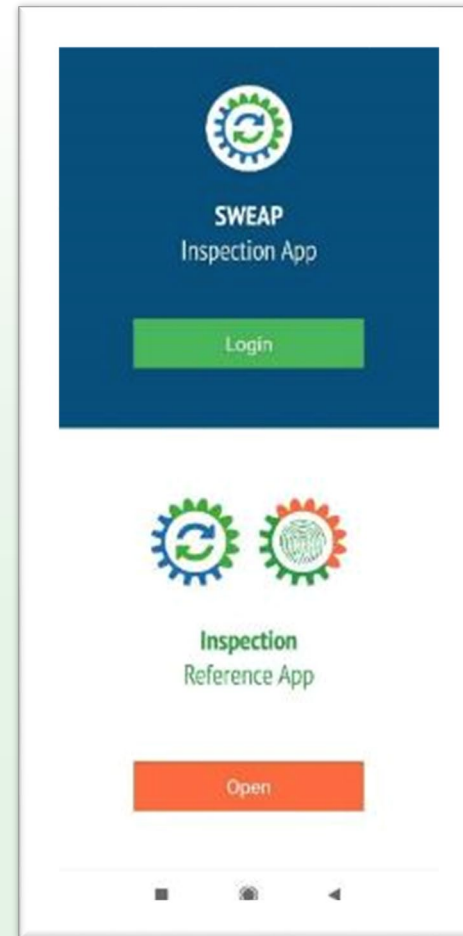
Countries taking part: Ireland, Northern Ireland, Latvia, Malta, Croatia, Romania, Denmark, Sweden and UK





# Apps

- ▶ Tool for 'on-the-road' for inspectors, regulators and law enforcement officers
  - ▶ References to legislation, problematic waste streams, waste codes
  - ▶ Available in the Android and Apple app stores and as web-version for desktop use
- ▶ <https://tfsinspections.app/>





Without either information from the waste generator or a detailed analysis, it is difficult to determine the exact composition. It will most likely require shipment as either EU48 or Y48.



Reference section

# And 'check the controls' for European shipments





## Flexible reporting

Authority Co-Ordinator – sets up inspector users, can edit inspections and download data, can choose which questions to set and which answers to share. Can change language.

Inspector – records inspections, can review own authority's data, can turn 'flags' on or off to add text

# Field reporting

20 countries using the app for reporting

132 officers

Multiple languages

Nominal data to Europol SIENA



Collect, report and store inspection data online either in field or office



Take photos and add them to inspection form



Can also bulk upload inspections



Flagging system to other authorities



Directly feeding certain data into other systems via API-file (e.g. Spotfire)



Available for intelligence analysis if authority agrees

Provides annual reports to EU



# SWEAP

Example of App data fields & replies which are stored within the CMS ...



The image displays four sequential screenshots of a mobile application interface for creating a new inspection. Each screenshot shows a different step in the process, with a progress indicator at the top of each screen.

- Step 2:** 'New Inspection - Step 2'. Fields include: 'Default country' (dropdown), 'Type of check' (dropdown), 'Name of site' (dropdown), 'Address of site' (dropdown), 'Legal site' (radio buttons: Yes, No, Unclear), 'Fossil number' (text input), and 'Type of site' (dropdown).
- Step 3:** 'New Inspection - Smart select'. A search bar is at the top. Below it, a list of 'Default address of sites' is shown with an example 'The Netherlands'. A section for 'All addresses of sites' contains several 'Example' entries for 'The Netherlands' and 'Germany'.
- Step 3:** 'New Inspection - Step 3'. Fields include: 'Type of waste' (text input), 'Description of waste' (text input), 'Assigned waste' (text input), 'Unlisted waste' (radio buttons: Yes, No), 'European Waste code' (dropdown), 'Recycl code' (dropdown), 'EMCD code' (dropdown), 'Consensus' (checkboxes: Import, Transit, Export), and 'Treatment' (dropdown).
- Step 4:** 'New Inspection - Step 4'. Fields include: 'Has the shipment been notified?' (radio buttons: Yes, No, Not applicable), 'Annex VI information' (radio buttons: Yes, No, Not applicable), 'Annex VI reference number' (text input), 'Is there a violation?' (radio buttons: Yes, No, Further investigation required), 'Type of violation' (dropdown), and 'Who is responsible?' (radio buttons: Site, Other party). A 'Further action' dropdown is at the bottom.





## Visualisation of inspection data

Visualisation tool:  
<https://www.sweap.eu/resources/tools/>

### Welcome to the SWEAP Inspections tool

To record inspection data on transfrontier shipments (TFS) of waste on the spot, the LIFE SWEAP project developed an inspection data reporting application for mobile devices. The app is for inspectors and law enforcement officers in the EU to record their inspections of waste shipments and allow their organisations to have a full record of the inspections, the violations detected and follow-up actions.

This tool summarises these inspections and may help you plan your future inspections.

For help using this tool please review the [guidance](#).

Please use the drop down navigation below to find the data you want to see:

Entrance

#### Summary Statistics

Total Countries Reported	Total Inspections	Most Common Waste Type with violations
29	18,244	Plastics



## Collaboration with Asian and African countries

- Sharing of verified sites between European countries
- Country controls
- Understanding destination countries' national legislation
- IMPEL attendance at annual Asian Network



## Next steps

- Customs training in 2022: Valencia, Romania and Felixstowe
- Increase in physical inspections and joint operations (including Operation Demeter)
- International engagement
- Industry meeting & guidance
- App sprints
- Release new GPS trackers
- Data contracts and 'onboarding' of authorities
- In-person best practice meeting







## Next steps (cont.)

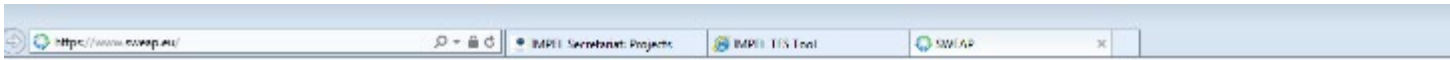
- Regional intelligence dissemination
- Webinars on ELVs and repatriations
- Training to judges and prosecutors



S



SWEAP



Building capacity and coordinating EU-wide inspections on shipments of waste to intensify the operational collaboration and enforcement actions between law enforcement communities

### THE LIFE SWEAP PROJECT

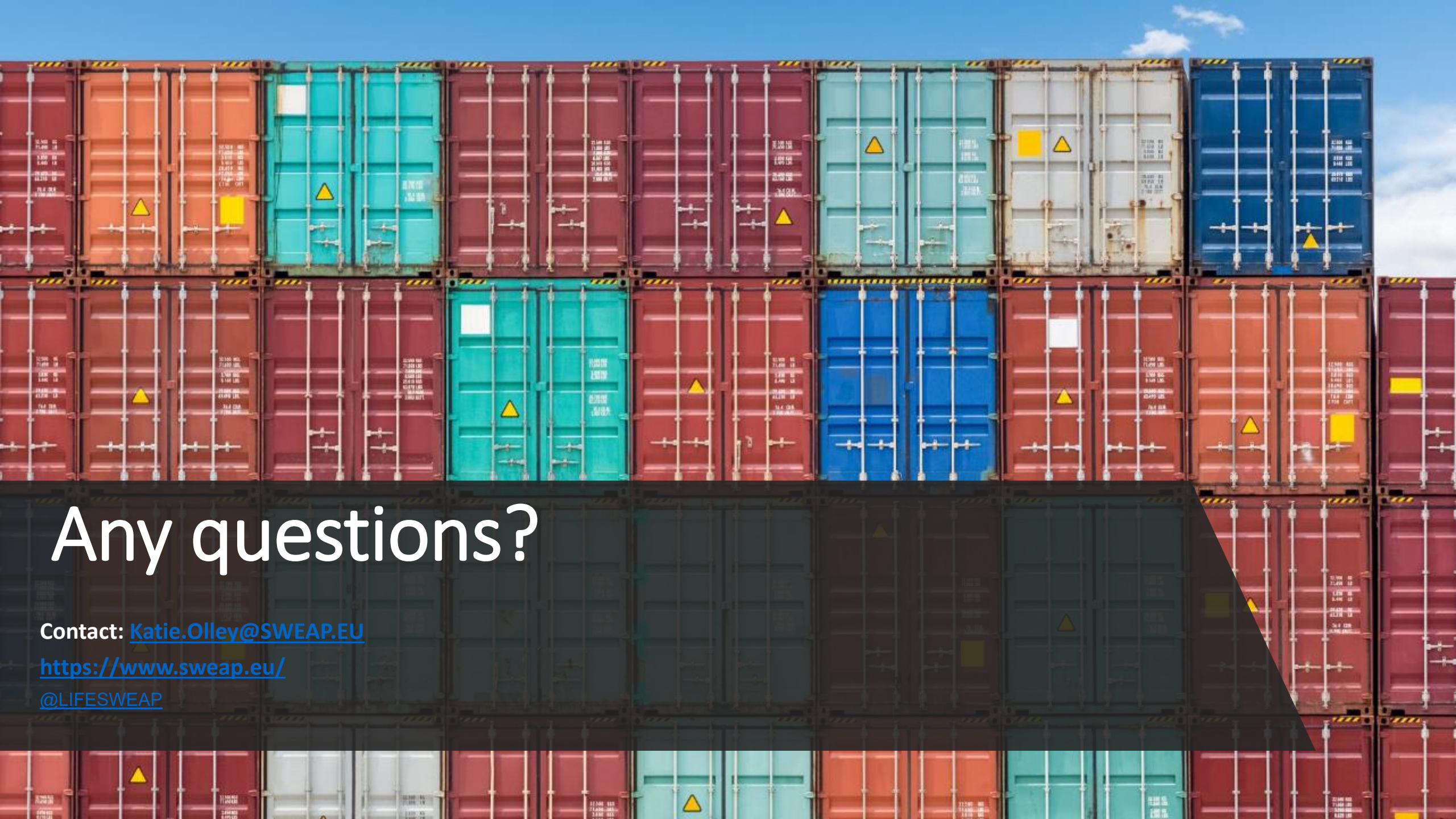
The Shipment of Waste Enforcement Actions Project (SWEAP) project is co-funded by the European Commission



Join the newsletter list and stay up to date on all LIFE SWEAP news.

Subscribe





# Any questions?

Contact: [Katie.Olley@SWEAP.EU](mailto:Katie.Olley@SWEAP.EU)

<https://www.sweap.eu/>

[@LIFESWEAP](#)