



National Environmental Guard Romania

IMPLEMENTATION STAGE

DIRECTIVE 2010/75/EU

OF THE EUROPEAN PARLIAMENT AND

OF THE COUNCIL ON INDUSTRIAL EMISSIONS (IED)

Enforcement Authority vs. Continuous Emissions Monitoring

Maria MIJA - *Commissioner*

National Environmental Guard



National Environmental Guard, is the national authority responsible for the inspections and control compliance and applying of the environmental legislation in integrated manner and uniform



Legislative Framework

- Directive 2010/75/EU of the European Parliament and of the Council of 24 November 2010 on industrial emissions (integrated pollution prevention and control) - consolidated version: [06/01/2011](#), transposed by:
- Law 278/2013 on industrial emissions with subsequent updates;
- Ministry Order no. 1446/2020 regarding Instructions for measuring and reporting pollutant emissions in the air.





Legislative Framework (eur-lex.europa.eu)

Legislative Framework

<https://legislatie.just.ro/Public/DetaliiDocument/152286>

Document 32010L0075

Text

Document information

Procedure

National transposition

Document summary

Save to My items

Up-to-date link

Permanent link

+	Portugal	07/01/2013	2
+	Romania	07/01/2013	3

MACHINE TRANSLATION

Transposition deadline: 07/01/2013

1. [Lege privind emisiile industriale](#)
Official publication: *Monitorul Oficial al României*; Number: 671; Publication date: 2013-11-01; Page: 00001-00047
2. [Ordonanța de urgență a Guvernului nr.101/2017 pentru modificarea și completarea Legii nr.278/2013 privind emisiile industriale](#)
Official publication: *Monitorul Oficial al României*; Number: 1007; Publication date: 2017-12-19; Page: 00004-00006
3. [Lege nr. 144/2018 privind aprobarea Ordonanței de urgență a Guvernului nr.101/2017 pentru modificarea și completarea Legii nr. 278/2013 privind emisiile industriale](#)
Official publication: *Monitorul Oficial al României*; Number: 512; Publication date: 2018-06-21; Page: 00002-00002

+	Slovenia	07/01/2013	25
---	----------	------------	----

PORTAL LEGISLATIV

ACASĂ DESPRE PROIECT FACILITĂȚI OFERITE LEGĂTURI UTILE

CUPRINS

Forme act

Forma consolidată
+ istoric consolidări

Forma de baza

+ Fișă act

CUPRINSUL ACTULUI

privind emisiile industriale

Capitolul I

Secțiunea 1
Secțiunea a 2-a

Capitolul II
Capitolul III
Capitolul IV
Capitolul V
Capitolul VI
Capitolul VII

PREȘEDINTELE
DEPUTAȚILOR VALERIU-STEFAN
ZGONEA PREȘEDINTELE
SENATULUI GEORGE-CRIN
LAURENTIU ANTONESCU

Anexa nr. 1

LEGE nr. 278 din 24 octombrie 2013

privind emisiile industriale

EMITENT PARLAMENTUL

Publicat în **MONITORUL OFICIAL nr. 671 din 1 noiembrie 2013**

Parlamentul României adoptă prezenta lege.

Capitolul I Dispoziții generale și domeniul de aplicare

Secțiunea 1 Scop și definiții

Articolul 1

Prezenta lege are ca scop prevenirea și controlul integrat al poluării rezultate din activitățile industriale, stabilind condițiile pentru prevenirea sau, în cazul în care nu este posibil, pentru reducerea emisiilor în aer, apă și sol, precum și pentru prevenirea generării deșeurilor, astfel încât să se atingă un nivel ridicat de protecție a mediului, considerat în întregul său.

Articolul 2

Prezenta lege nu se aplică activităților de cercetare și dezvoltare sau testării de noi produse și procese.

Articolul 3

Pentru aplicarea prezentei legi, termenii și expresiile de mai jos au



Environmental Inspections references:

- The National Environmental Guard - setting annually the **Inspection Plan**, including Districts (43) plans - plans drawn up on the basis of a general assessment of the environmental aspects of each District.
- For the objectives that will be controlled, it is made a risk assessment, regarding both fields:
 - pollution control and
 - field of biodiversity control, biosecurity and protected areas.
- The risk of the controlled objectives is defined as a function of two factors:
 - the severity of a consequence (effect) and
 - the probability that a consequence to occur (probability)

National Environmental Guard



Inspections Plan

IED 2020		No.	Nr.
		Instalations	Inspections
1	ALBA	25	29
2	ARAD	31	61
3	ARGEȘ	44	58
4	BACĂU	33	61
5	BIHOR	40	89
6	BISTRIȚA NĂSAUD	6	9
7	BOTOȘANI	14	14
8	BRĂILA	24	23
9	BRAȘOV	50	97
10	BUCUREȘTI	28	21
11	BUZĂU	43	63
12	CĂLĂRAȘI	48	44
13	CĂRAȘ SEVERIN	17	32
14	CLUJ	32	31
15	CONSTANȚA	39	55
16	COVASNA	7	13
17	DĂMBOVIȚA	31	97
18	DOLJ	16	32
19	GALAȚI	15	15
20	GIURGIU	17	15
21	GORJ	15	71
22	HARGHITA	5	5
23	HUNEDOARA	22	46
24	IALOMIȚA	29	28
25	IAȘI	34	69
26	ILFOV	15	36
27	MARAMUREȘ	13	13
28	MEHEDINȚI	5	10
29	MUREȘ	30	44
30	NEAMȚ	23	24
31	OLT	16	14
32	PRAHOVA	51	90
33	RBDD	0	0
34	SĂLAJ	10	18
35	SATU MARE	37	37
36	SIBIU	19	19
37	SUCEAVA	9	25
38	TELEORMAN	16	18
39	TIMIȘ	67	53
40	TULCEA	13	17
41	VĂLCEA	14	13
42	VASLUI	30	31
43	VRANCEA	12	22
		1045	1562

IED 2021		No.	No.
		Instalations	Inspections
1	ALBA	25	29
2	ARAD	38	75
3	ARGEȘ	44	38
4	BACĂU	35	56
5	BIHOR	41	62
6	BISTRIȚA NĂSAUD	6	8
7	BOTOȘANI	13	13
8	BRĂILA	26	4
9	BRAȘOV	50	83
10	BUCUREȘTI	28	31
11	BUZĂU	45	42
12	CĂLĂRAȘI	48	64
13	CĂRAȘ SEVERIN	18	42
14	CLUJ	33	37
15	CONSTANȚA	39	52
16	COVASNA	7	8
17	DĂMBOVIȚA	32	61
18	DOLJ	16	23
19	GALAȚI	16	29
20	GIURGIU	16	11
21	GORJ	15	67
22	HARGHITA	7	5
23	HUNEDOARA	23	47
24	IALOMIȚA	29	47
25	IAȘI	37	23
26	ILFOV	15	16
27	MARAMUREȘ	13	13
28	MEHEDINȚI	5	5
29	MUREȘ	31	65
30	NEAMȚ	23	21
31	OLT	16	20
32	PRAHOVA	52	50
33	RBDD	0	0
34	SĂLAJ	10	19
35	SATU MARE	40	43
36	SIBIU	20	20
37	SUCEAVA	10	10
38	TELEORMAN	17	18
39	TIMIȘ	71	43
40	TULCEA	13	19
41	VĂLCEA	14	13
42	VASLUI	30	34
43	VRANCEA	12	14
		1079	1380



Institutional framework

Competent authorities:

- (1) The Central Public Authority for Environmental Protection:
 - establishing the implementation legal framework;
 - exchange of information carrying out ;
 - sending reports to the EC
- (2) The National Agency for Environmental Protection:
 - coordinating the law provisions implementation at the territorial level.
- (3) County Agencies for Environmental Protection:
 - responsible for issuing, re-examining, updating the environmental integrated permits /environmental permits
- (4) The National Environmental Guard and its territorial structures at county level :
 - inspection and control.



The Romania Plants according of Law 278/2013 / Directive 2010/75/EU

- Installations according to Annex I:
(IPPC - Integrated Pollution Prevention and Control):
863 installations
- Combustion facilities according to Chapter III and Annex V:
(LCP - Large Combustion Plants)
126 installations
- Waste Incineration/co-incineration plants according to Chapter IV and Annex VI:
27 installations (24 according to Annex I);
- Volatile Organic Compounds (VOC) installations under Chapter V (Installations and activities using organic solvents) and Annex VII:
656 installations (24 according to Annex I)





National Environmental Guard Romania

Enforcement Authority vs. Continuous Emissions Monitoring

The National Environmental Guard (NEG) carries out inspection and control actions, according to the
AUTOMATIC MEASUREMENT SYSTEMS QUALITY ASSURANCE PROCEDURE
(SR EN 14181)



Ministry Order no. 1446/2020 regarding Instructions for measuring and reporting pollutant emissions in the air

SR EN 14181:2015 - Emissions from fixed sources

- Quality assurance of automatic measurement systems.

NEG apply joint action with an accredited laboratory (RENAR) regarding the following control activities:

1. THE FUNCTIONALITY TEST OF THE EQUIPMENT
2. QUAL PROCEDURE for the second LEVEL OF QUALITY ASSURANCE, and
3. AST PROCEDURE-ANNUAL SUPERVISION TRIAL





NEG inspections and control actions:

1. FUNCTIONALITY TEST

NEG verifies as part of the functionality test, 30 days before starting the measurements, the following:

- Documents and records of the Automatic Measurements System (AMS)
 - a plan of the system;
 - maintenance / use manuals;
 - supervision records, maintenance report;
- Reporting the results of functionality test

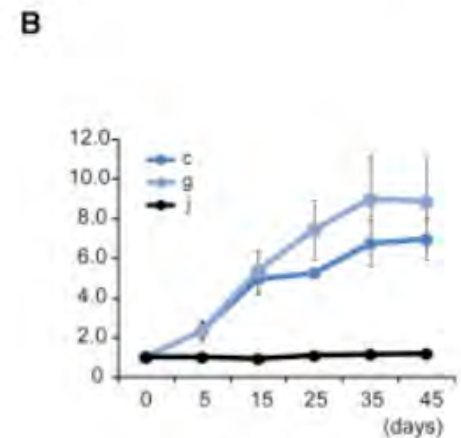
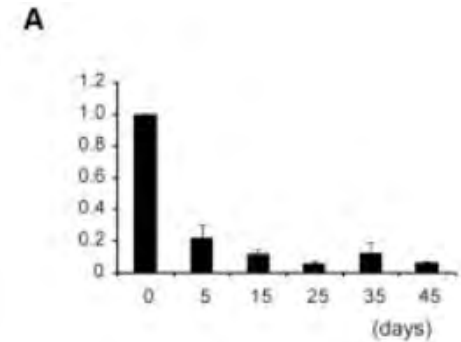




NEG inspections and control actions:

2. PROCEDURE QAL-2, the second level of quality assurance:

- NEG performs parallel measurements, according to a standardized reference method (MRS):
 - for each calibration - 15 parallel measurements
- The values variability obtained through the automatic measurement system, is compared and evaluated beside with the legislative data;
- A calibration function of the variability of the measured values is established;
- The measurements comparing purpose is to ensure that the calibration function data is valid for the conditions field where the installation will operate.





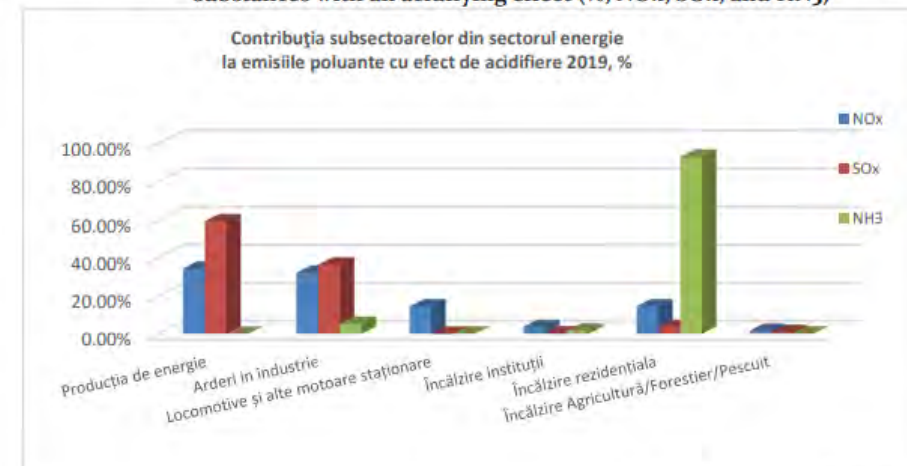
NEG inspections and control actions:

2. PROCEDURE QAL-2, the second level of quality assurance

The parallel measurements are carried out as follows:

- For each automatic measurement system, at every 3/5 years, or more frequently at the other authorities request, or if the legislation requires (e.g. parallel measurements every 3 years in the case of waste incineration plants, according to EU Directive 2000/76/EC);
- After a major change in the operation of the facility;
- After major changes or repairs to the automatic measurement system which can significantly influence the obtained results.

The contributions of the activity subsectors in the energy sector, in 2019, to the emissions of polluting substances with an acidifying effect (% , NO_x, SO_x, and NH₃)



Source: Romania's Informative Inventory Report 2021

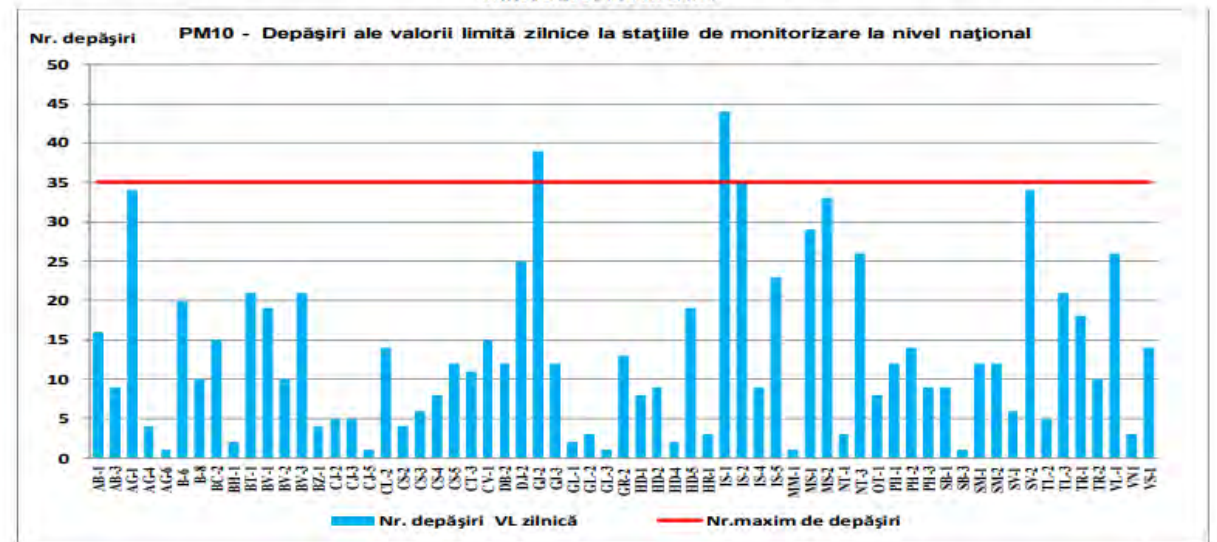


NEG inspections and control actions:

3. AST PROCEDURE – annual surveillance

- Annually, at least are carried out 5 parallel measurements, through a standardized reference method (MRS), in the presence of an accredited laboratory, qualified personnel and verified and calibrated equipment;
- The purpose is to evaluate whether the measured values obtained from the automatic measurement system meet the conditions required by the legislation, as well as verifying the validity of the calibration function obtained through the QUAL2 procedure.

Number of exceedances of the daily limit value for PM₁₀ particles in suspension at monitoring stations at national level in 2020





Graphics Sources:

Public information:

The state of the Romania environment

- Report of indicators Year 2020:

<http://www.anpm.ro/raport-de-mediu>

http://www.anpm.ro/documents/12220/2209838/RAPORT++INDICATORI+2020_EN.pdf/84d75a1b-6fb5-426e-8e66-d88e439c3723

Raport de mediu

- > Rapoarte lunare
- > Rapoarte anuale

Starea mediului in Romania

- Report indicators Year 2020
- Indicatori RSM 2020
- Raport anual privind Starea Mediului în România pe anul 2020
- Indicatori RSM 2019
- Report indicators Year 2019
- Raport anual privind Starea Mediului în România pe anul 2019
- Indicatori RSM 2018
- Report indicators Year 2018
- Raport anual privind Starea Mediului în România pe anul 2018
- Raport anual privind Starea Mediului în România pe anul 2017
- Indicatori RSM 2017
- Report indicators Year 2017
- Raport anual privind Starea Mediului în România pe anul 2016

Thank you for your attention!

