



**Chief Inspectorate of  
Environmental Protection**

**ENVIRONMENTAL PROTECTION  
INSPECTION SYSTEM  
IN POLAND  
INDUSTRIAL EMISSIONS INSPECTIONS**

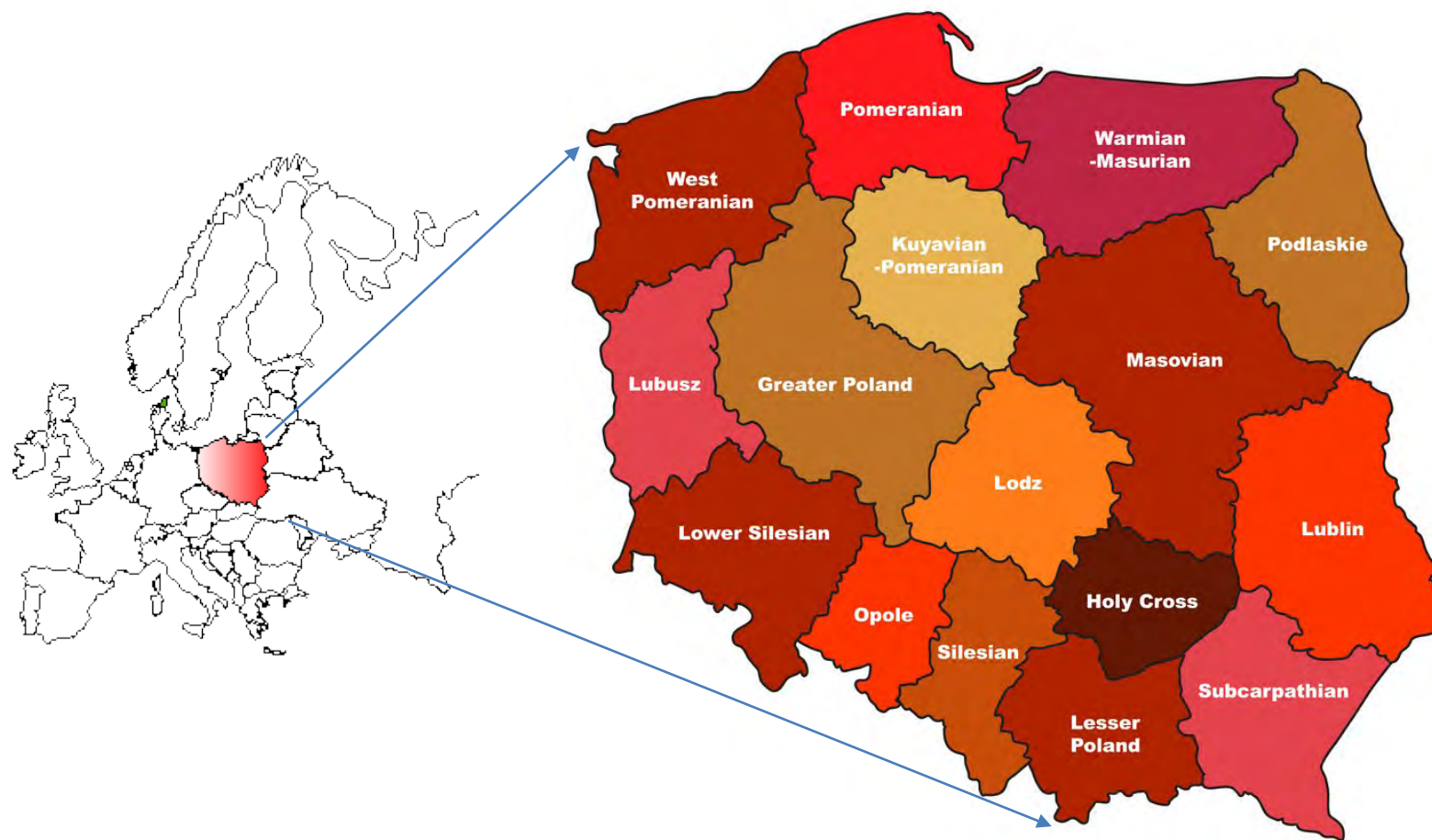
**Małgorzata Budzyńska  
Chief Inspectorate for Environmental Protection**

Brussels, December 6, 2022



**Chief Inspectorate of  
Environmental Protection**

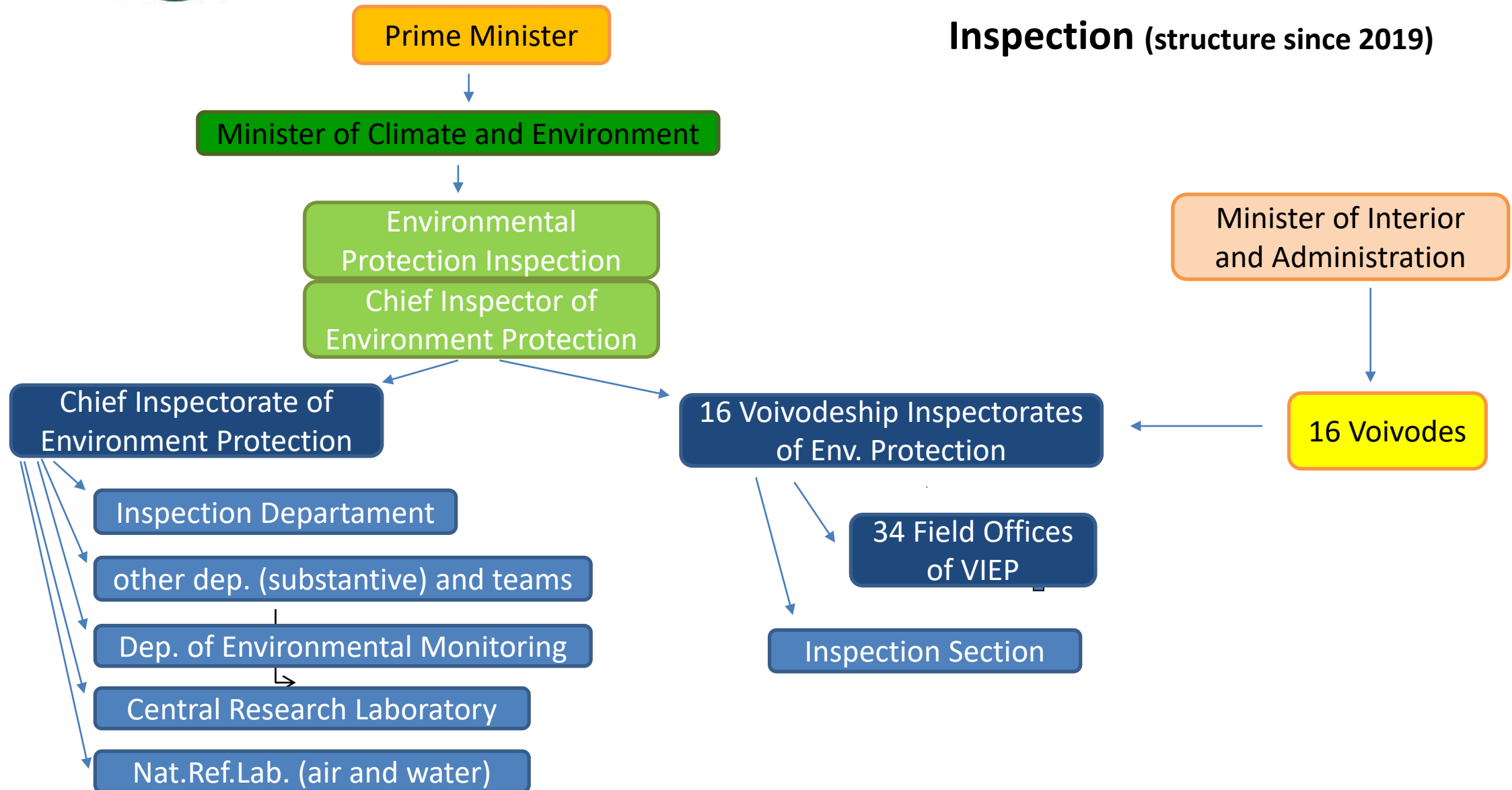
## Poland in Europe; Voivodeships in Poland





## Chief Inspectorate of Environmental Protection

## Environmental Protection Inspection (structure since 2019)





Chief Inspectorate of  
Environmental Protection

## Division of tasks:

- Inspection for Environmental Protection – inspections,
- regional and districts' self-government offices – issuing permits.

The control of compliance with environmental protection regulations is carried out on the basis of the Act of 20 July 1991 on the Inspection of Environmental Protection



Chief Inspectorate of  
Environmental Protection

## Major tasks of Inspection of Environmental Protection

- Around **50 inspection goals** to be included in the annual inspection plans
- **Topics:** IED, Waste management, Water and sewage, Air pollution, Seveso, Reach, F-Gases (HFC), Projects with significant environmental impact, Agriculture activity, Noise, Electromagnetic fields, PRTR, Access to genetic resources, Market surveillance, GMM/GMO, Timber (...)



The frequency of inspections is determined taking into account the systematic assessment of environmental risks caused by installation and provisions regarding the frequency of inspections.

IPPC - period between inspections shall not exceed:

- 1 year for installations posing the highest risk,
- 3 years for holders of EMAS or for installations posing the least risk.



**Chief Inspectorate of  
Environmental Protection**

Inspection for Environmental Protection conducts inspections in a uniform manner throughout the country and undertakes post-control activities based on the control system developed at the Chief Inspectorate for Environmental Protection, taking into account the Recommendation of the European Parliament and of the Council of 4 April 2001 providing for minimum criteria for environmental inspections in the Member States (2001/331/EC)



## Inspection - beginning

- Meeting of inspectors with a person(s) authorized to represent the inspected plant;
- Presentation of documents authorizing inspection to be carried out (inspector ID and authorization to inspect);
- Signing the authorization by an authorized representative of the plant;
- Making an entry in the company control book;
- Presentation of the scope and anticipated course of inspection.





Inspection are divided into:

- Scheduled
- Unplanned

Scheduled inspections:

- With field visit, selected problems or comprehensive
- Based on documentation (without going into the field) - analysis of mandatory self-monitoring tests resulting from legal provisions



## Unplanned checks:

- With field visit – intervention, investment, on request
- With field visit – intervention – without entity
- Documentation – self-monitoring tests analysis
- Documentation – other than self-monitoring tests analysis



**Chief Inspectorate of  
Environmental Protection**

**Unplanned** inspections shall, in particular, be carried out to deal (as quickly as possible) with complaints and requests for interventions, major accidents, to identify breaches of the requirements set out in integrated (and sectoral) permits, and, where appropriate, before granting or amending an integrated permit.



## Conducting inspections:

- Collection of materials and documents regarding the subject of the inspection;
- Field visit of facilities, installations, devices – report the same day;
- Making measurements and taking samples for testing;
- Analysis of documents collected during inspection and assessment of compliance with environmental protection requirements, including assessment of measurement results;
- Documenting identified violations by collecting relevant documents, making photographic documentation;
- Preparation of documentation from the carried out inspection.



### End of the inspection:

- Setting the date of signing the inspection protocol;
- Bringing the entity with the content of the protocol ;
- Discussing the findings of the inspection, indicating the infringements found and applying sanctions for the violations found;
- Informing the operator about his / her entitlements to the possibility of submitting comments to the inspection protocol;
- Noting the end of the inspection in the control book kept by the entrepreneur;
- Signing the inspection protocol by authorized inspectors and an authorized representative of the controlled entity or in case of refusal to sign the inspection protocol, the fact that the inspecting inspector has noticed it;
- Transfer of the inspection protocol to an authorized plant representative.



**Chief Inspectorate of  
Environmental Protection**

## Post-inspection activities

Undertaking post-inspection activities depends on the type and nature of violations found and non-conformities found in relation to the data contained in the plant's documents.



## Environmental Protection Inspection **instruments**:

- Caution
- Ticket
- Post-inspection order
- Proposal to law enforcement bodies
- Proposal to law administrative bodies
- Decisions imposing administrative fine
- **Decisions suspending the use or activity** (the date of suspension is specified, taking into account the need for environmentally safe completion of activity or use)



**Chief Inspectorate of  
Environmental Protection**

Operator has to inform VIEP to what extent the post-inspection order is implemented.

The one who doesn't inform or untruthfully informs – is subject to arrest, restriction of liberty or a fine.





## Chief Inspectorate of Environmental Protection

	2018	2019	2020	2021
Number of IED installations in Poland (database VIEP)	3893	3935	3989	4031
Installations with the required permit (no/%)	3846/98,8%	3883/98,7%	3938/98,8%	3979/98,7%
Without permit	47	52	51	52
No of inspections	1395	1320	1407	1603
No of violations	757 (532/225)	613 (436/177)	745 (539/206)	849 (614/235)
No of decisions suspending the use of installation	15	9	12	12
No of tickets/cautions	284/540	300/447	294/580	370/652
No of post-inspection orders	530	428	487	582
No of administrative fines (decisions)	64	39	49	106



## Entrepreneurs' Law

- Notification of the intention to carry out the inspection
- Beginning of inspection after delivery 7 – 30 days
- The duration of all inspections of authority in one calendar year may not exceed - depending on the size of the enterprise – 12, 18, 24, 48 working days



IED have been transposed into the Polish legal system:

- Act on Environmental Protection,
- Act on the waste,
- Act on the greenhouse gas emission allowance trading system,
- Act amending Act on providing information about the environment and its protection, public participation in environmental protection and environmental impact assessments,
- Act amending the Act on the greenhouse gas emission allowance trading system and some other acts,
- Act amending the Act on maintaining cleanliness and order in municipalities and certain other acts.



**Chief Inspectorate of  
Environmental Protection**

## **Supervising Authority**

Ministry of Climate and Environment

## **Permitting Authority**

- Voivodship Marshal
- Starost
- Regional Director for Environmental Protection
- Environmental protection authority responsible for mining waste

## **Inspection Authority**

Environmental Protection Inspector

## **Appeals Authority**

Minister of Climate and Environment (for decisions issued by voivodship marshals) and appeals boards (for decisions issued by starosts)



# Procedures and work instructions for planned and unplanned inspections

**ITCSS (IT Control Support System)** is a basic tool supporting inspections, which allows to generate reports, protocols, inspection plans, to view the status of follow-up orders implementation etc.

REGON/PESEL

NIP

Nazwa

Województwo

Powiat

Gmina

WIOS/Delegatura

Numer teczki

Kategoria zakładu

Grupa zakładu

Podlega pod dyrektywę

Rodzaj zakładu

Kod pocztowy

Miejscowość

Ulica/nr działki

Archiwalny?

Czy zakład ma obowiązek przesyłania danych automonitoringowych?

Czy przesyła dane automonitoringowe?

Czy podlega PRTR?

Ocena ryzyka od  do

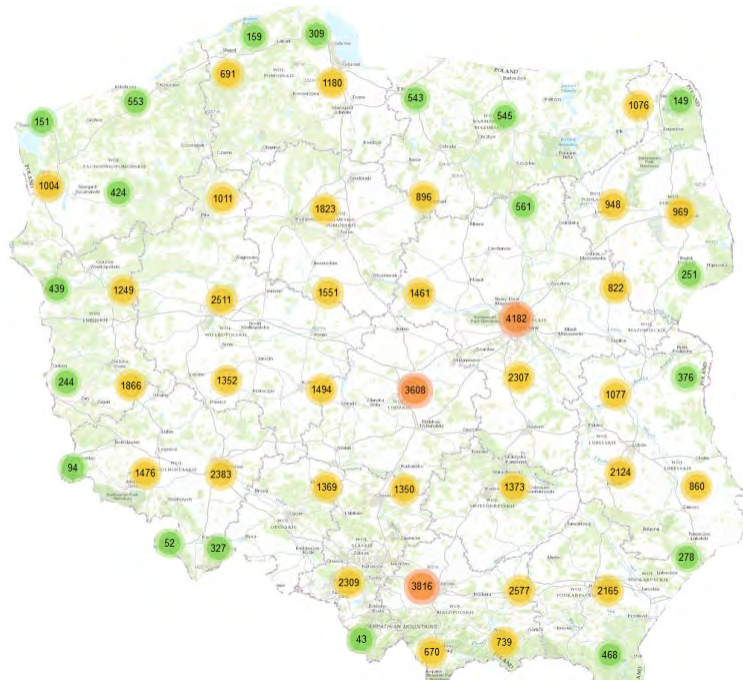
Star

- Tereny objęte programem likwidacji bomb ekologicznych
- Transport odpadów
- Ujęcia wody
- Wprowadzający baterie i akumulatory
- Wprowadzający sprzęt elektryczny i elektroniczny
- Współspalanie odpadów
- Wytwórcy odpadów wydobywczyc
- Zakłady drzewne, meblarskie i leśne
- Zakłady dużego ryzyka wystąpienia awarii (ZDR)
- Zakłady górnicze (w tym odkrywkowe)
- Zakłady objęte systemem handlu uprawnieniami do emisji gazów cieplarnianych
- Zakłady obróbki metali,
- Zakłady odzysku odpadów
- Zakłady podlegające kontroli w zakresie czynników chłodniczych należących do fluorowanych gazów cieplarnianych (F- gazów)
- Zakłady podlegające kontroli w zakresie genetycznie modyfikowanych organizmów (GMO)




**Chief Inspectorate of  
Environmental Protection**

# Map based service of IEP (available also in English)



<http://iswk.gios.gov.pl/>

✕ .PGE Górnictwo i Energetyka Konwen 

**.PGE Górnictwo i Energetyka Konwencjonalna  
S.A. - Oddział Zespół Elektrowni Dolna Odra,  
Elektrownia DOLNA ODRA Nowe Czarnowo**

Nowe Czarnowo 76, 74-105 Nowe Czarnowo  
województw zachodniopomorskie  
REGON: 000560207

List of inspections (click for details):

- o WIOS-SZ 14/2012 (2012-01-17 - 2012-01-17)
- WIOS-SZ 398/2013 (2013-12-06 - 2013-12-20)
- WIOS-SZ D227/2013 (2013-12-18)
- WIOS-SZ 117/2014 (2014-04-16 - 2014-05-09)
- WIOS-SZ 117/2014 (2014-04-16 - 2014-05-09)
- WIOS-SZ 308/2014 (2014-10-30 - 2014-11-07)
- WIOS-SZ 348/2014 (2014-12-16 - 2014-12-29)
- WIOS-SZ D133/2015 (2015-03-06)
- WIOS-SZ 161/2015 (2015-06-17 - 2015-06-29)
- WIOS-SZ 68/2016 (2016-03-11 - 2016-03-18)

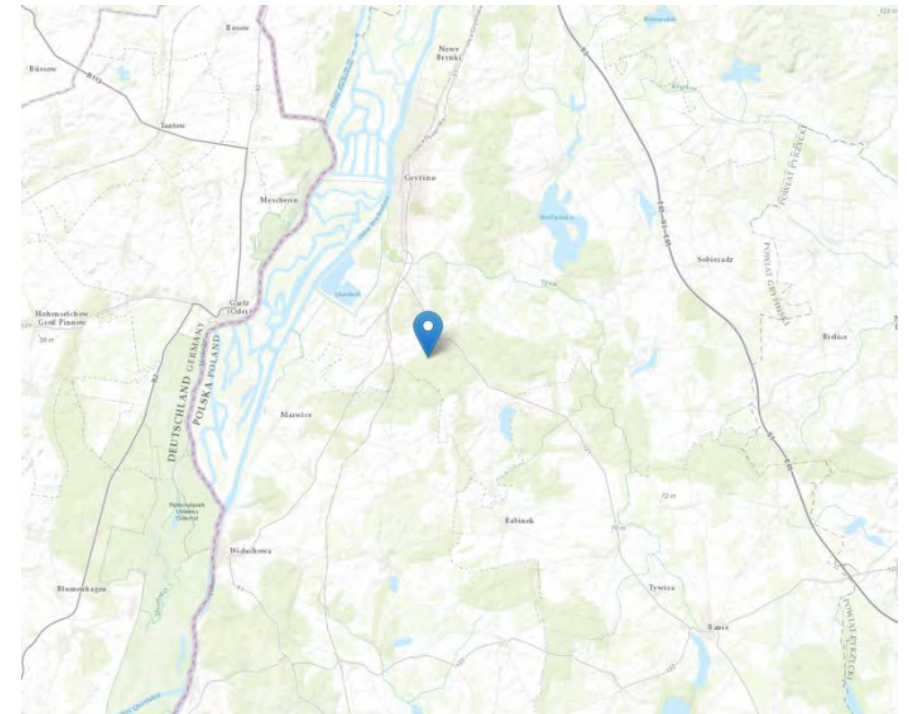
Inspection date:  
2012-01-17 - 2012-01-17

Inspection number  
WIOS-SZ 14/2012

Inspection type  
Non planned

Measurements taken  
No

Violation  
No





# Procedures and work instructions on inspections

For each inspected establishment, an inspector is required to make a risk assessment of the environmental impact of the entity or verify (update) the result of the analysis carried out during the previous inspection.

Risk Category	Environmental impact	Inspection frequency
I	Very high	Every year
II	High	Not less often than every 3 years
III	Moderately harmful	VIEP decision
IV	Little	VIEP decision
V	Insignificant	VIEP decision



**Chief Inspectorate of  
Environmental Protection**

**ENVIRONMENTAL PROTECTION  
INSPECTION SYSTEM  
IN POLAND  
INDUSTRIAL EMISSIONS INSPECTIONS**

**Małgorzata Budzyńska  
Chief Inspectorate for Environmental Protection**

Brussels, December 6, 2022