



ENVIRONMENT AT A GLANCE IN THE EU'S EASTERN PARTNER (EaP) COUNTRIES

Presentation to the WPEI, 22 November 2023
by Matthew Griffiths
Senior Programme Manager, ENV/FIG



Why focus on EaP countries?



Funded by
the European Union

EU4Environment
Green Economy in Eastern Partner Countries

EU4Environment
Water and Data in Eastern Partner Countries





Web-book structure: A focus on green transition

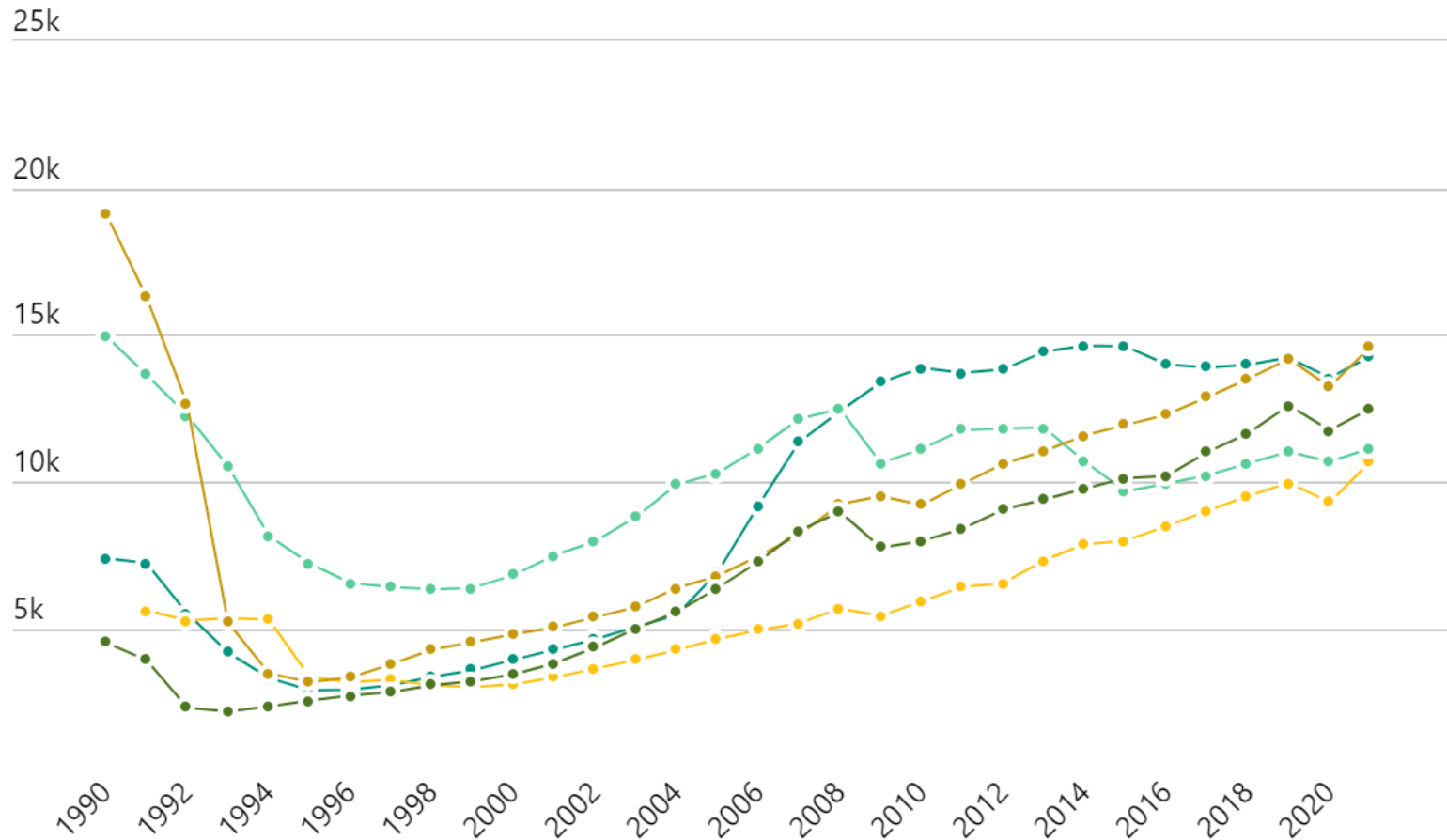
- **Socio-economic context**
 - GDP growth
 - Population
- **Natural asset base**
 - Land use
 - Freshwater resources
 - Waste generation and treatment
- **Environmental resource productivity**
 - CO₂ productivity
 - Energy mix and consumption
 - Material productivity and footprint
- **Environmental quality of life**
 - Exposure to environmental hazards
 - Exposure to climate-related hazards
 - Access to drinking water and sewage treatment
- **Economic opportunities and policy responses**
 - Technology and innovation
 - Taxes and transfers
 - Protected areas



GDP growth in EaP countries: Three decades of progress

Real Gross Domestic Product per capita

In USD per capita

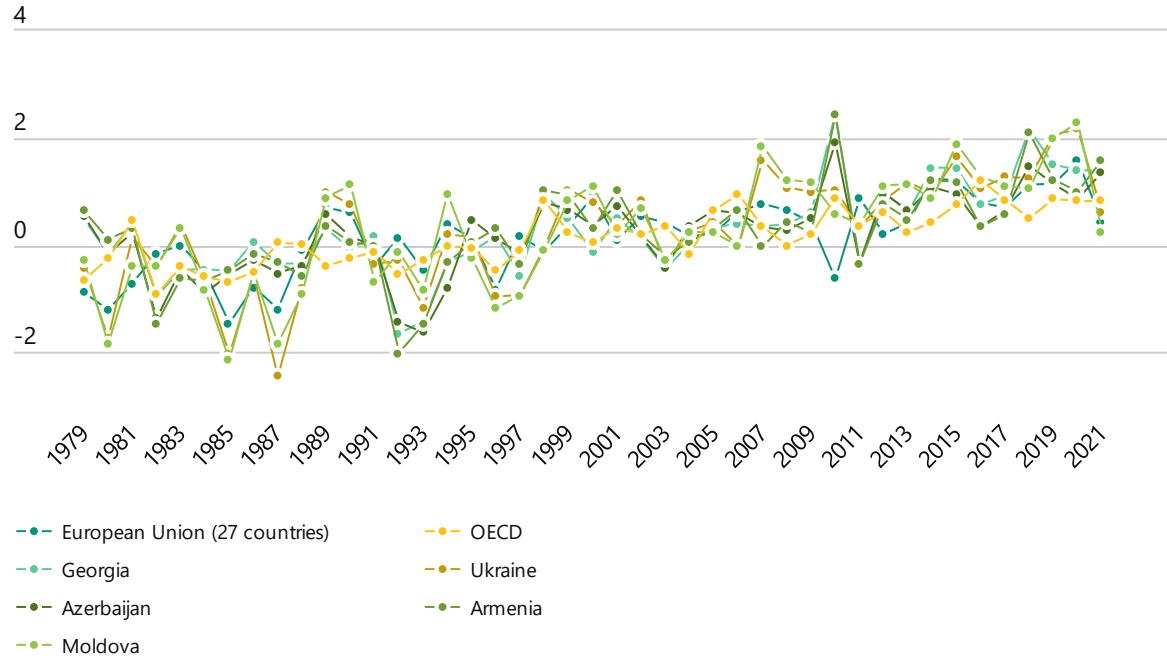




Climate change adaptation and mitigation: the need for data in decision-making

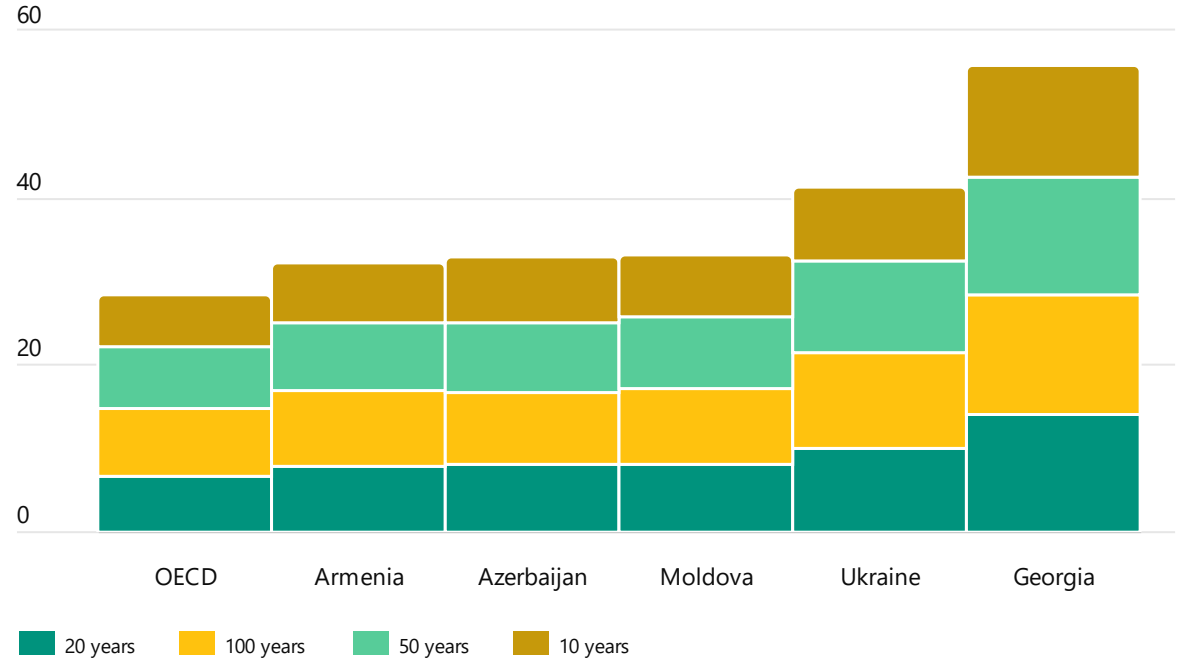
Annual surface temperature change

in degrees Celsius



Population exposure to river flooding

Population exposed (%), latest year available



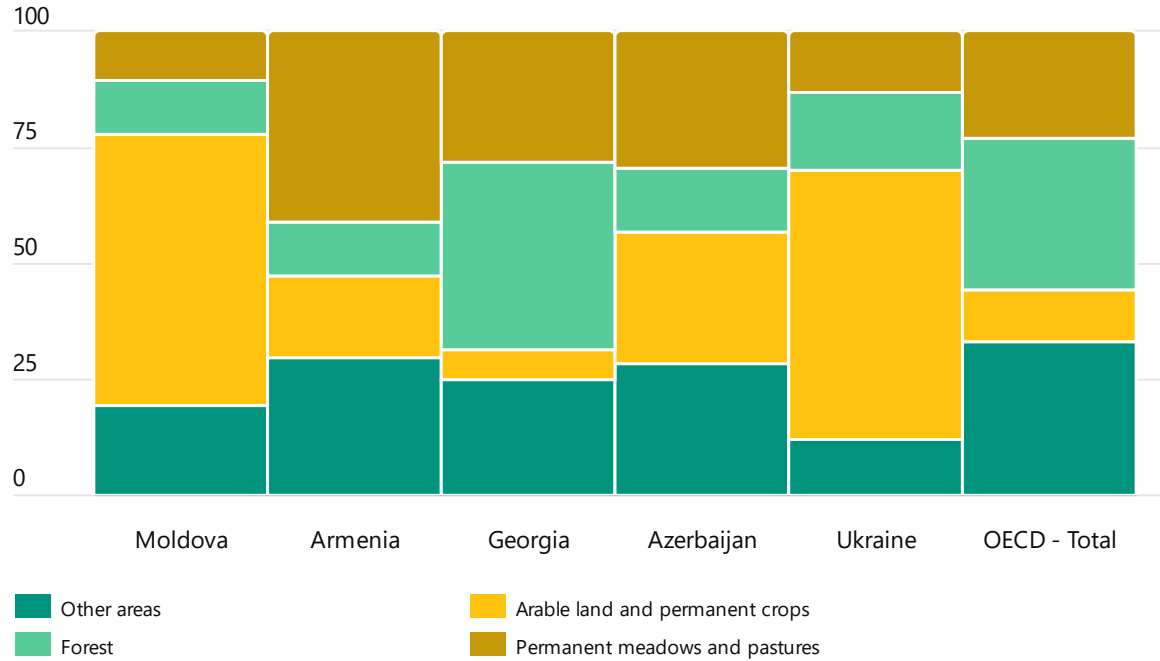
Note: Based on data available as of 202XX



Natural asset base in EaP countries

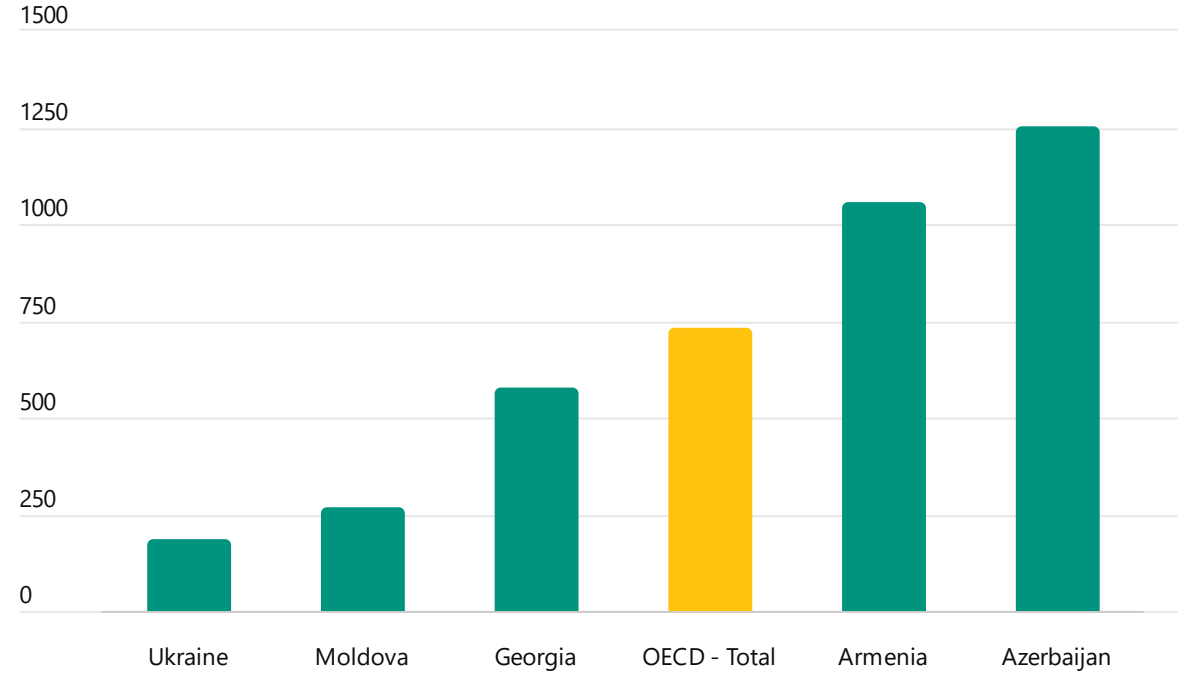
Land use

As a percentage of land area (and in square kilometres when hovering)



Freshwater abstractions

Gross abstractions per capita, cubic metre per capita



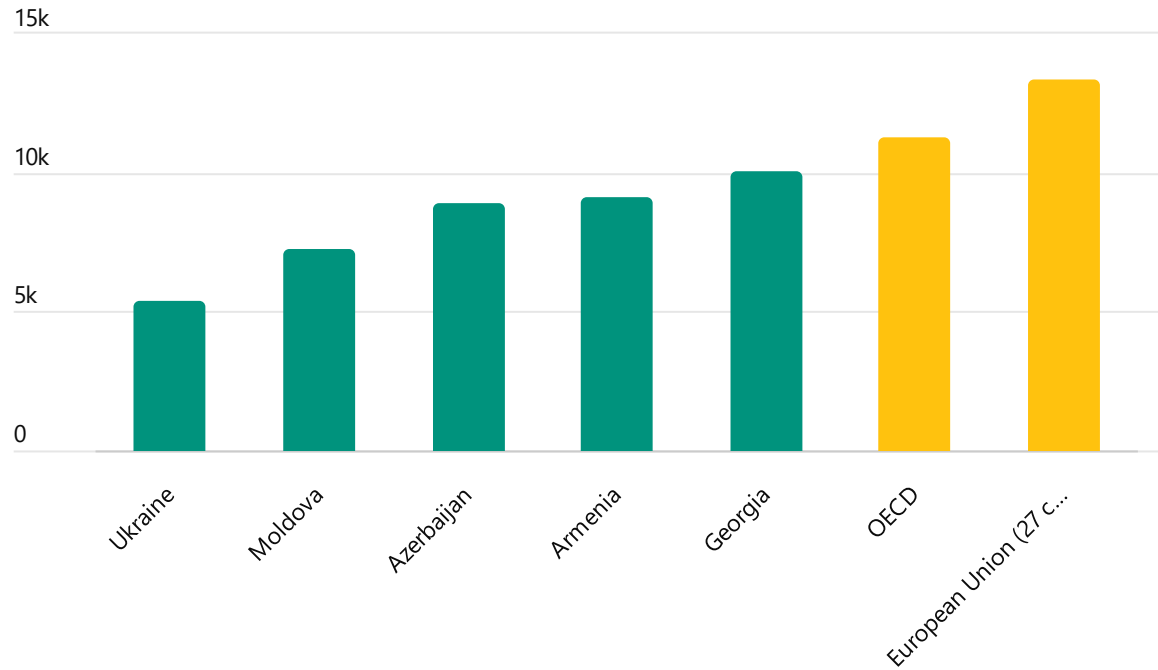
Note: Based on data available as of 202XX



Energy and CO2 productivity

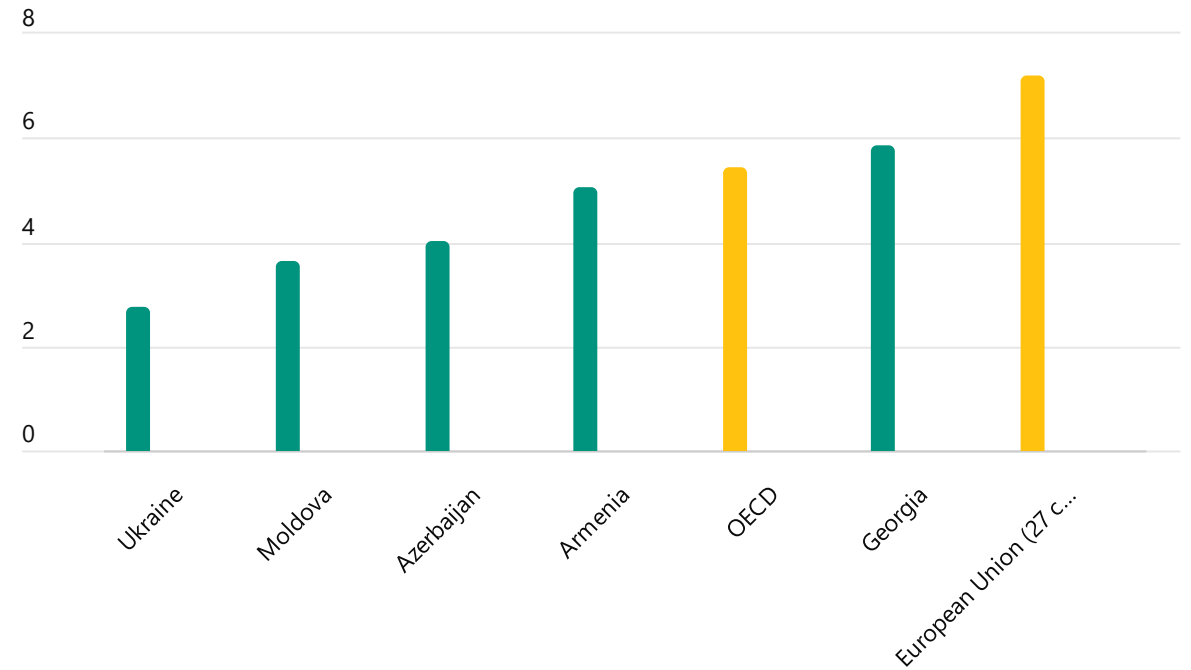
Energy productivity

GDP per unit of TES, USD per tonne of oil equivalent



Production-based CO2 productivity

GDP per unit of energy-related CO2 emissions in 2021, US dollars per unit of CO2



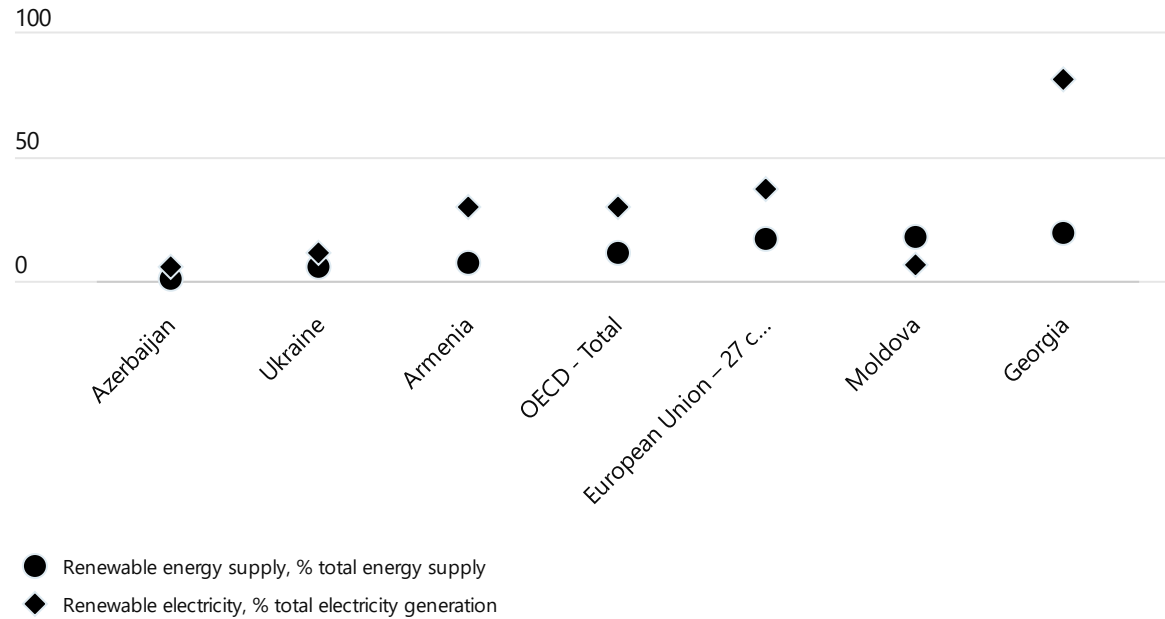
Note: Based on data available as of 202XX



Potential expansion for renewables and biofuels

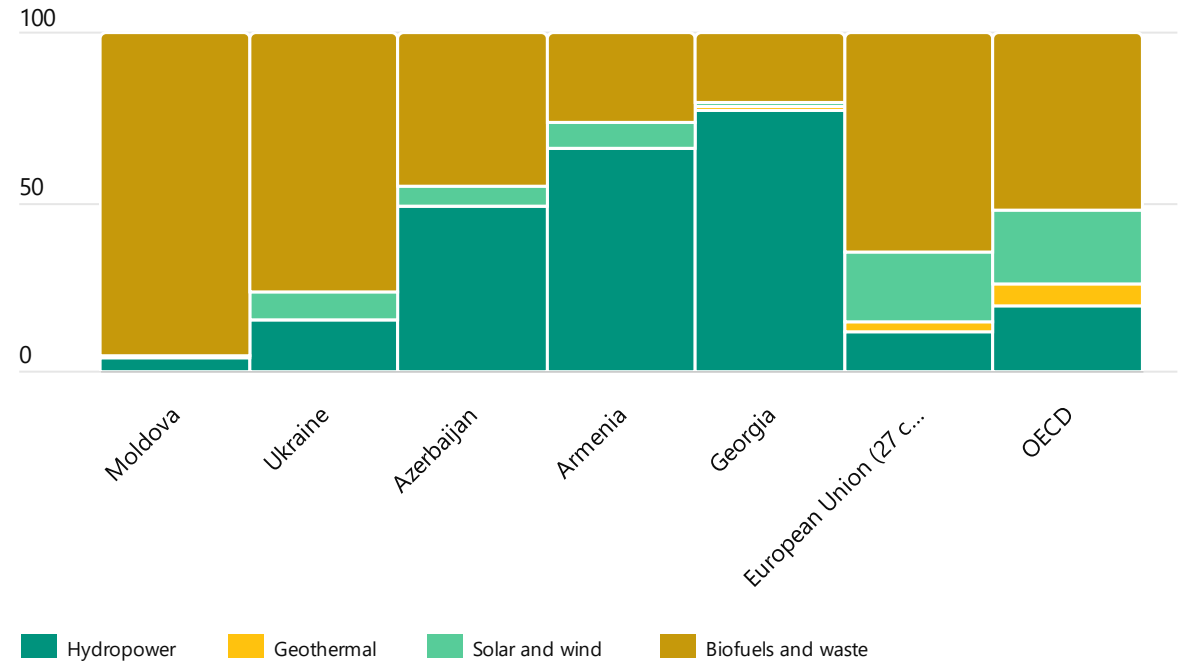
Renewable energy total energy supply (resp. renewable electricity production)

Share of total energy supply (resp. total electricity production)



Renewable energy by source

Share in renewable energy (on the y-axis) and in terajoules (when hovering)



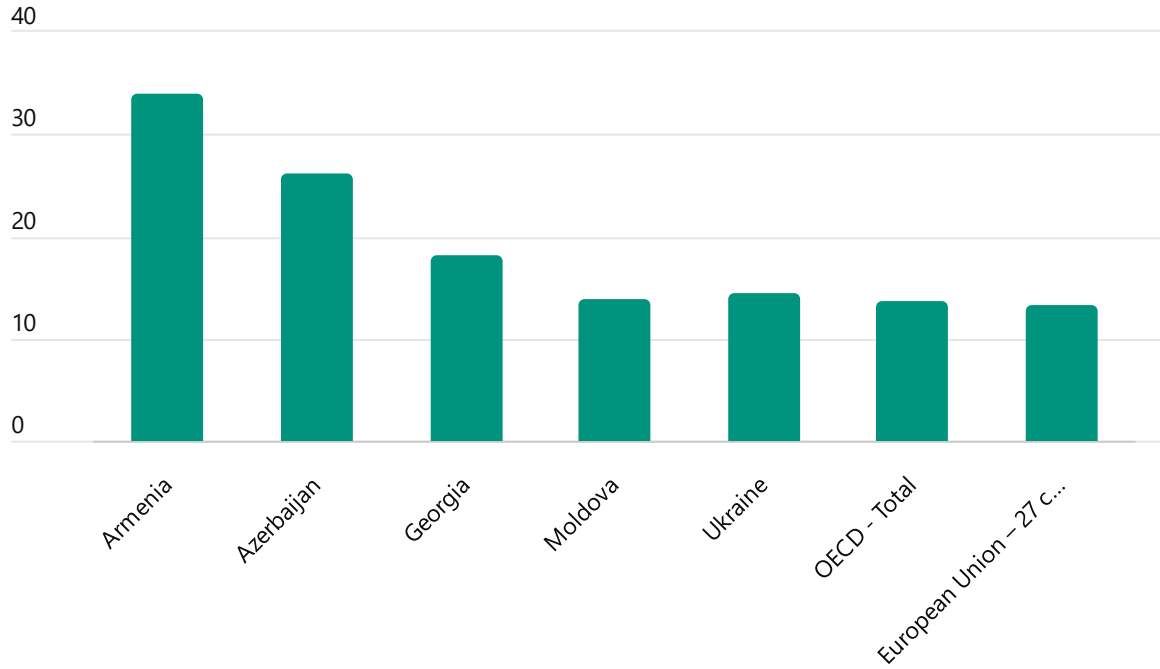
Note: Based on data available as of 202XX



The need to modernise infrastructure and transport

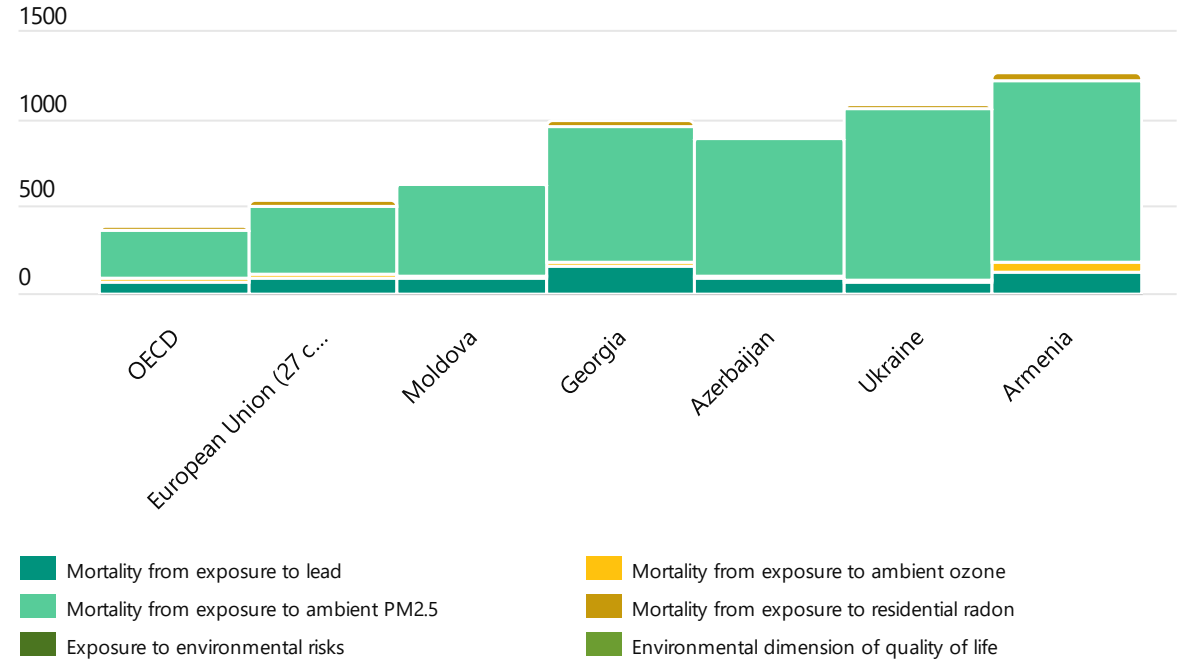
Mean population exposure to PM2.5 fine particules

Micograms per cubic metre



Mortality for selected pollutants

Per one million inhabitant



Note: Based on data available as of 202XX



THANK YOU

Matthew Griffiths, Senior Programme Manager, ENV/FIG
matthew.griffiths@oecd.org