



# Conserving biodiversity in the Amazon - A landscape approach

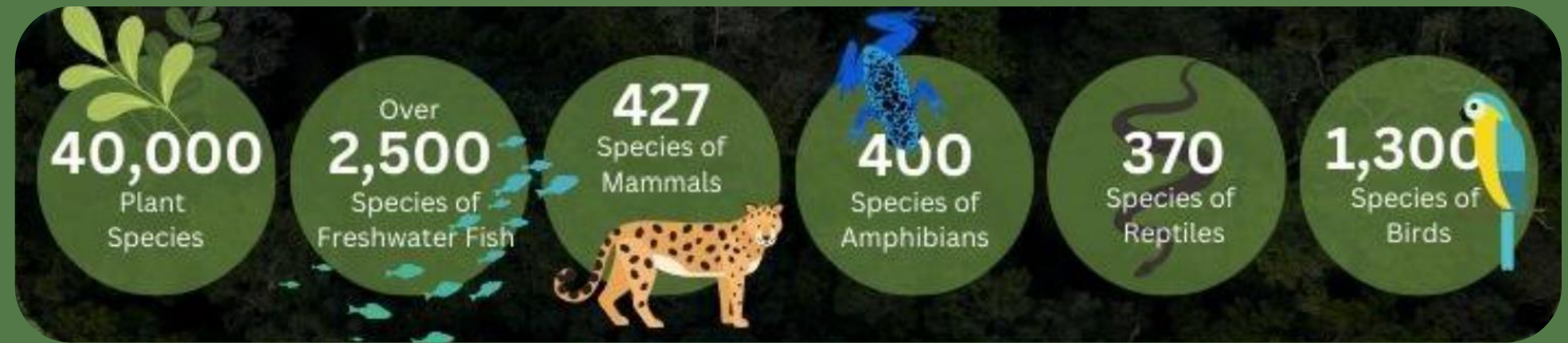
**Advancing Global Biodiversity: Insights from the  
World Bank and EU Conservation Initiatives in  
Protected Areas**  
*May 23, 2024*





# Biodiversity in the Amazon

The Amazon biome is the most biodiverse place on Earth  
**10%** of the world's known species (endemic and endangered ones)



**49.4%**

of the Amazon region is designated as Protected Areas\* and indigenous territories

**30%**

of the Amazon are wetlands

**37** Ramsar sites

**20%**

of the global freshwater resources found in the region

**“Every species in this incredibly biodiverse system represents solutions to a set of biological challenges -- any one of which has transformative potential and could generate global human benefits.... Amazon biodiversity plays a critical role as part of global systems, influencing the global carbon cycle, as well as hemispheric hydrological systems, serving as an important anchor for South American climate and rainfall”. Tom Lovejoy**

## Biodiversity and ecosystem services are under threat

### Migratory fish species

- **Pirarucú** (*Arapaima gigas*)
- **Dorado catfish** (*Brachyplatystoma rousseauxii*)

- Habitat loss and fragmentation
- Deforestation and degradation

**26%**

**of the Amazon is under a state of advanced disturbance**







**Regional Project**  
Coordination and  
capacity building

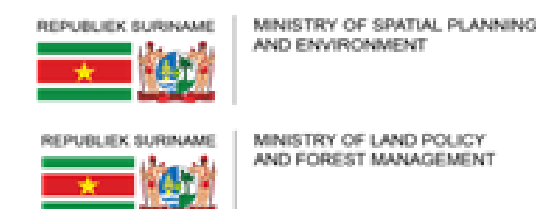
# Amazon Sustainable Landscapes Program

## Improve Integrated Landscape Management and Conservation of Ecosystems in Targeted Areas in the Amazon Region

**GEF6: 2018-2024**  
Brazil, Colombia, Peru

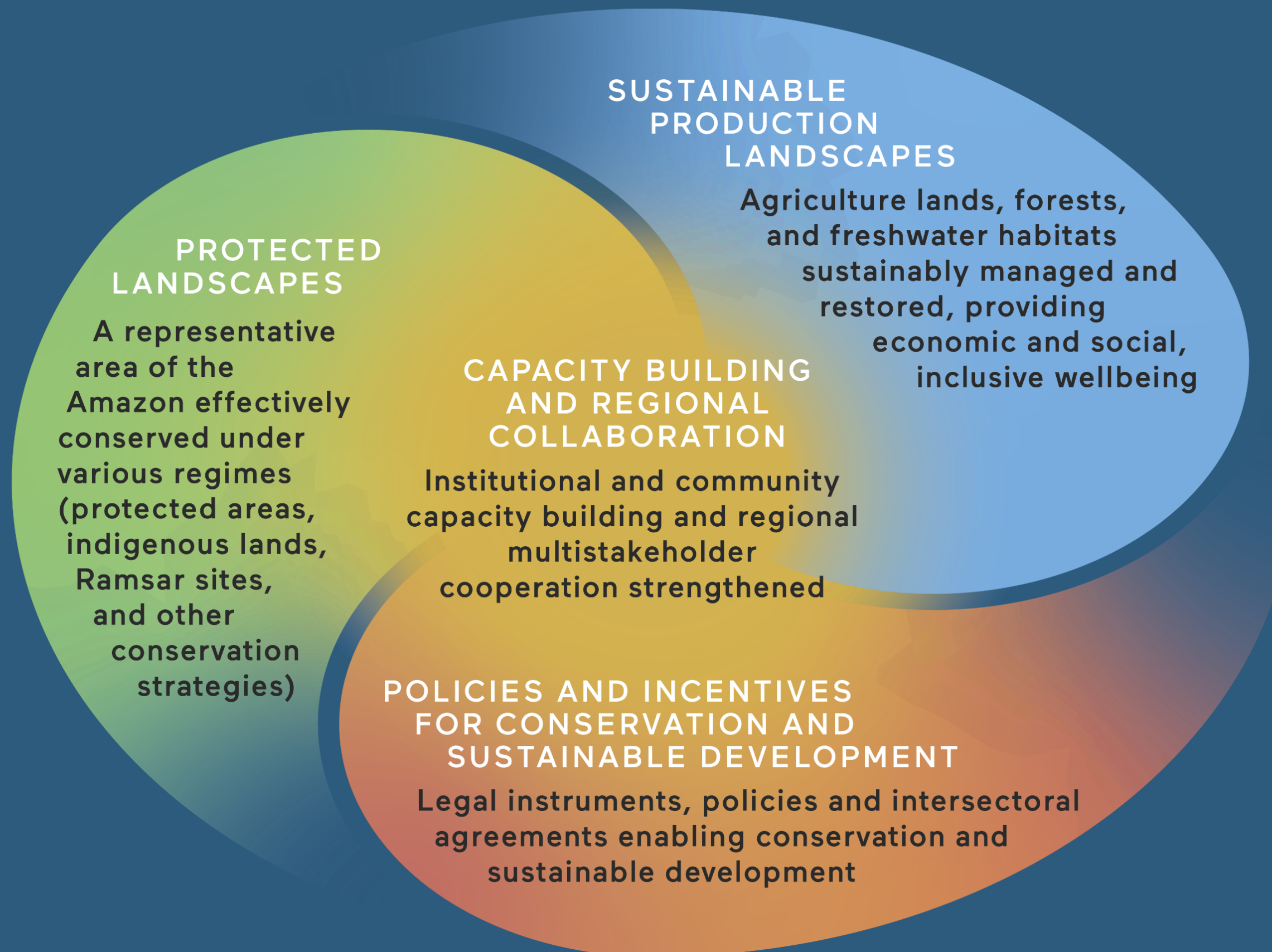
**GEF7: 2021 – 2027**  
Bolivia, Brazil, Colombia,  
Ecuador, Guyana, Peru,  
Suriname

**GEF8 2025-2030**  
Bolivia, Brazil, Colombia,  
Ecuador, Guyana, Peru,  
Suriname, Venezuela





# Biodiversity as part of a landscape approach



## Expected results

**+87 M has.**

of protected areas with management improved

**4.4 M has.**

of protected areas created

**3.7 M has.**

where sustainable practices are promoted

**48,5 K has.**

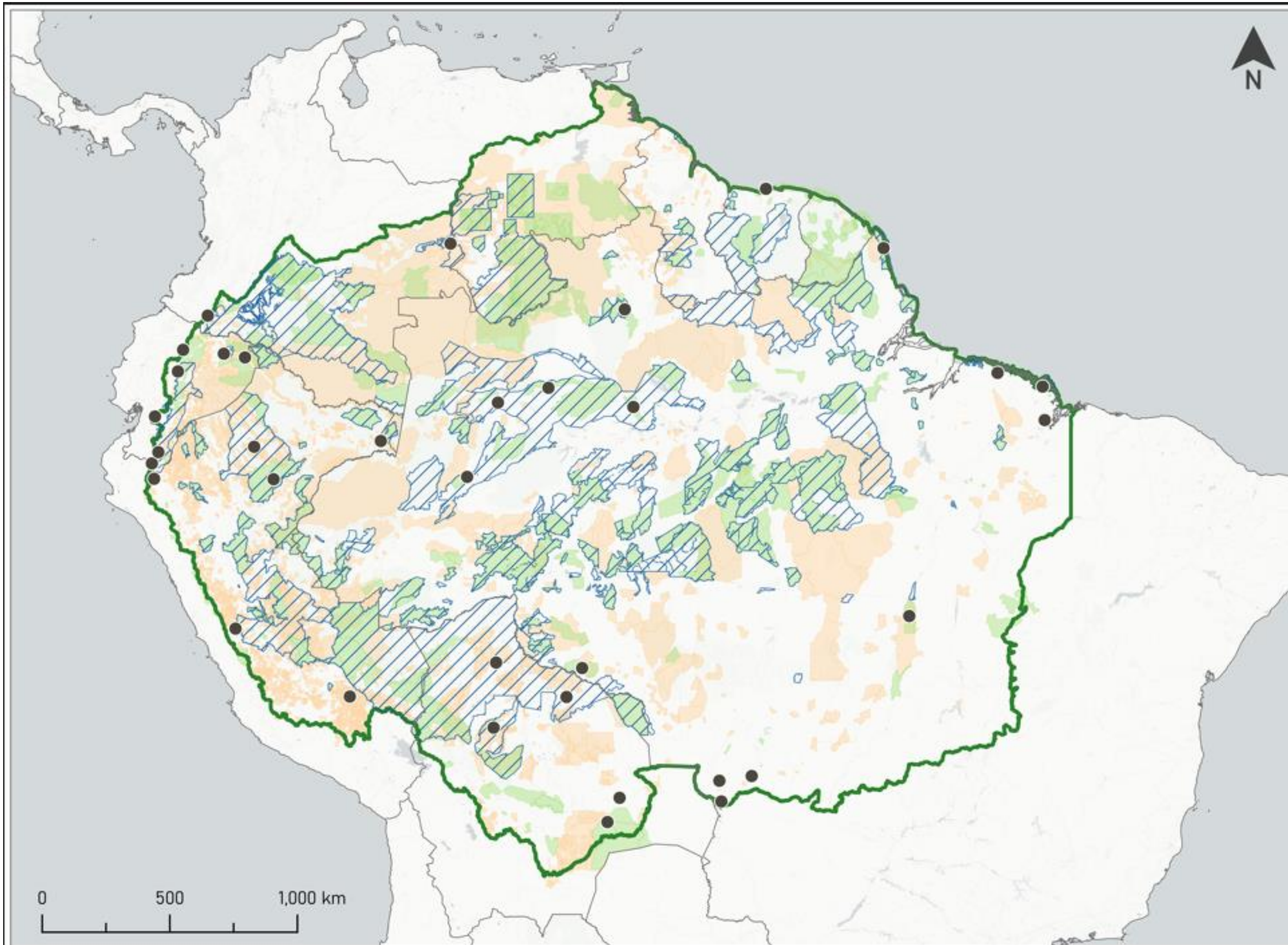
restored

**+60 K**

people directly benefited



ASL 1/2 intervenes in 241  
national and subnational PAs  
(110 million ha) (slightly  
bigger than Bolivia)





# Brazil: Paisagens Sustentáveis da Amazônia (Br-ASL)



**ASL Brasil**  
Paisagens Sustentáveis da Amazônia

**+60M**  
has.

Enhanced  
management of  
protected areas

**+4M**  
has.

New or expanded  
protected areas

More than 10 RAMSAR sites are part of the Protected Areas in the intervention zone of the project, including Mamirauá, Cabo Orange, Ríó Negro and Ríó Juruá.



An accumulated capital of **US\$ 238 M** to support **120 Protected Areas**, 62.1 million hectares, including RAMSAR sites.



# Colombia: Forest Conservation and Sustainability in the Heart of the Colombian Amazon (CA)



**ASL** Amazon Sustainable Landscapes Program

**+7M**  
has.  
Enhanced management of protected areas

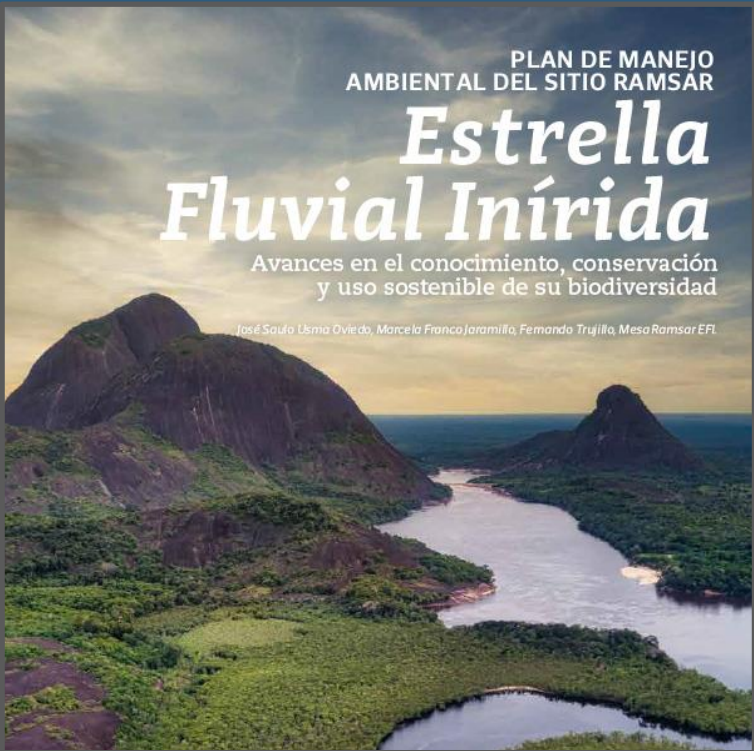
**+3M**  
has.  
New protected areas

**+1,707**  
has.  
Restored Areas

Support implementation of 14 Pas management plans, strengthened governance structures in IT, biodiversity monitoring, surveillance, and control in two RAMSAR sites.



Lagos de Tarapoto



Estrella Fluvial de Inírida (EFI)



**USD 45 million**  
raised for financial long-term mechanism for Colombia's protected area system



# The ASL regional coordination - knowledge exchange on best practices for BD conservation and sustainable management

## ASL Wetlands

- **Assessment ecosystem services**
- **Exchange on management best practices, policies and monitoring systems.**
- **Research on threats, map vulnerable areas, and exchange best practices for river dolphin protection.**



## ASL BD Monitoring

- **Wildlife Insights platform – tailored to ASL**
- **Capacity building on camera trapping**
- **Analysis of BD status and trends from images**





# Scaling up WBG interventions

Country  
programs

## Amazonia Viva

Regional  
cooperation

A Green Amazon

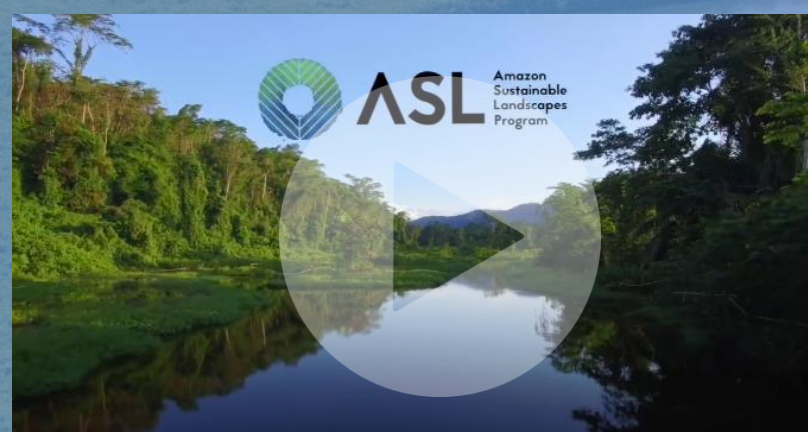
A Prosperous Amazon

A Livable Amazon





# Thank you!



[asl-info@worldbank.com](mailto:asl-info@worldbank.com)